



# REIKU®-System

HighTech Kabelschutz

HighTech Cable-Protection

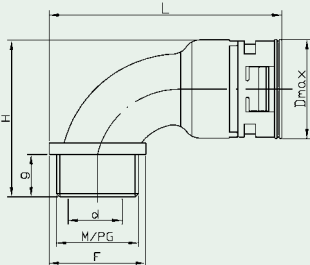


2010/11  
[www.reiku.de](http://www.reiku.de)

# 90°-Bogenwinkel mit integrierter Manschetten-Dichtung und Außengewinde, IP 67 rohrseitig

90° arched elbow with integrated seal, male thread, IP 67 on tube

22



**VP** Polyamid, mehrteilig  
**B** 90°-Bogenwinkel  
**R** mit rohrseitiger Dichtung  
**V** mit Dichtungssatz (IP 67)  
**B** schwarz  
**G** grau  
**10** Nennweite  
**M** metrisches Gewinde  
**P** PG-Gewinde  
**16** Gewindegröße

polyamide, multi-components  
 90° arched elbow  
 with seal on tube  
 with seal set (IP 67)  
 black  
 grey  
 Nominal width  
 metric thread  
 PG thread  
 thread size

VP B R B - 10 M 16

## VP B R G / VP B R B, metr. Andere Gewinde auf Anfrage other thread sizes on request

Bestell-Nr. grau grey	Article no schwarz black	für for NW	M	d	g	Dmax	L	H	F	kg/100 St.	(VE) St.
										kg/100 pcs.	(PU) pcs.
VP B R G-10M16	VP B R B-10M16	10	16 x 1,5	9,9	11,0	21,1	56,0	37,6	20,0	0,73	50
VP B R G-10M20	VP B R B-10M20	10	20 x 1,5	9,9	11,0	21,1	59,3	37,6	26,5	0,79	50
VP B R G-12M16	VP B R B-12M16	12	16 x 1,5	8,7	11,0	24,3	59,3	41,0	24,5		50
VP B R G-12M20	VP B R B-12M20	12	20 x 1,5	12,0	11,0	24,3	59,3	41,0	24,5	1,06	50
14*											
VP B R G-17M20	VP B R B-17M20	17	20 x 1,5	14,7	13,0	30,4	68,5	48,2	24,5	1,72	50
VP B R G-17M25	VP B R B-17M25	17	25 x 1,5	16,7	13,5	30,4	71,0	48,2	29,5	1,73	50
VP B R G-23M25	VP B R B-23M25	23	25 x 1,5	20,1	14,0	40,0	87,8	59,0	35,0		30
VP B R G-23M32	VP B R B-23M32	23	32 x 1,5	22,1	14,0	40,0	88,1	59,0	35,5	2,66	30
VP B R G-29M32	VP B R B-29M32	29	32 x 1,5	25,7	14,0	46,0	98,0	66,0	43,0		30
VP B R G-29M40	VP B R B-29M40	29	40 x 1,5	28,6	14,0	46,0	99,0	66,0	45,0	4,56	30
VP B R G-36M40	VP B R B-36M40	36	40 x 1,5	28,3	14,0	56,0	110,4	78,0	49,5		10
VP B R G-36M50	VP B R B-36M50	36	50 x 1,5	36,0	14,0	56,0	113,4	78,0	55,5	8,27	10
VP B R G-48M50	VP B R B-48M50	48	50 x 1,5	41,2	14,0	70,0	129,5	91,5	59,5		10
VP B R G-48M63	VP B R B-48M63	48	63 x 1,5	49,0	14,0	70,0	134,0	91,5	68,5	12,19	10

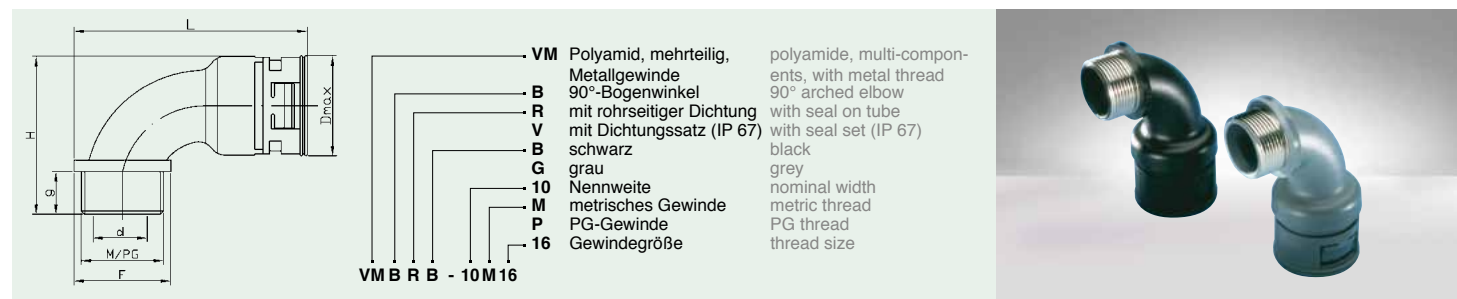
## VP B R G / VP B R B, PG Andere Gewinde auf Anfrage other thread sizes on request

Bestell-Nr. grau grey	Article no schwarz black	für for NW	PG	d	g	Dmax	L	H	F	kg/100 St.	(VE) St.
										kg/100 pcs.	(PU) pcs.
VP B R G-10P09	VP B R B-10P09	10	09	10,0	11,0	21,1	56,0	37,6	20,0	0,88	50
VP B R G-10P11	VP B R B-10P11	10	11	9,9	11,0	21,1	57,3	37,6	22,5	0,92	50
VP B R G-10P13	VP B R B-10P13	10	13,5	9,9	11,0	21,1	58,3	37,6	24,5	0,96	50
VP B R G-12P11	VP B R B-12P11	12	11	12,0	11,0	24,3	58,5	41,0	23,0	1,20	50
VP B R G-12P13	VP B R B-12P13	12	13,5	12,0	11,0	24,3	59,3	41,0	24,5	1,27	50
14*											
VP B R G-17P13	VP B R B-17P13	17	13,5	14,7	13,0	30,4	69,8	48,2	27,0	2,00	50
VP B R G-17P16	VP B R B-17P16	17	16	16,7	13,0	30,4	70,0	48,2	27,5	2,00	50
VP B R G-23P21	VP B R B-23P21	23	21	22,3	14,0	40,0	87,8	59,0	35,0	3,10	30
VP B R G-29P29	VP B R B-29P29	29	29	28,8	14,0	46,0	98,3	66,0	43,5	4,60	30
VP B R G-36P36	VP B R B-36P36	36	36	36,2	14,0	56,0	112,6	78,0	54,0	8,40	10
VP B R G-48P48	VP B R B-48P48	48	48	49,3	14,0	70,0	132,8	91,5	65,0	12,30	10

\*Armaturen für NW 14 mit Adapter PA W AB-14/17 möglich, siehe Seite 56 \* Connectors for NW 14 available combined with PA W AB-14/17, see page 56

# 90°-Bogenwinkel mit integrierter Manschetten-Dichtung und Metall-Außengewinde, IP 67 rohrrseitig

90° arched elbow with integrated seal, male metal thread, IP 67 on tube



## VM B R G / VM B R B, metr. Andere Gewinde auf Anfrage other thread sizes on request

Bestell-Nr. grau grey	Article no schwarz black	für for NW	M	d	g	D	L	H	F	kg/100 St. kg/100 pcs.	(VE) St. (PU) pcs.
VM B R G-10M16	VM B R B-10M16	10	16 x 1,5	10,0	11,0	21,1	58,0	38,1	24,0	1,24	30
VM B R G-10M20	VM B R B-10M20	10	20 x 1,5								30
VM B R G-12M16	VM B R B-12M16	12	16 x 1,5	8,7	11,0	24,3	59,6	41,0	25,0		30
VM B R G-12M20	VM B R B-12M20	12	20 x 1,5	11,9	12,0	24,3	58,8	42,0	23,5	1,84	30
		14*									
VM B R G-17M20	VM B R B-17M20	17	20 x 1,5	14,8	13,0	30,4	70,0	48,2	27,5	2,58	30
VM B R G-17M25	VM B R B-17M25	17	25 x 1,5	16,7	13,0	30,4	72,8	48,2	33,0	2,59	30
VM B R G-23M32	VM B R B-23M32	23	32 x 1,5	22,2	14,0	40,0	91,9	59,0	43,0	4,44	30
VM B R G-29M32	VM B R B-29M32	29	32 x 1,5	23,2	14,0	46,0	98,3	66,0	43,5		20
VM B R G-29M40	VM B R B-29M40	29	40 x 1,5	28,6	14,0	46,0	102,0	66,5	51,0	7,05	20
VM B R G-36M40	VM B R B-36M40	36	40 x 1,5	28,4	14,0	56,0	111,2	78,0	51,0		10
VM B R G-36M50	VM B R B-36M50	36	50 x 1,5	36,2	14,0	56,0	116,2	78,0	61,0	10,58	10
VM B R G-48M63	VM B R B-48M63	48	63 x 1,5	49,7	14,0	70,0	134,8	91,0	70,0	17,48	10

## VM B R G / VM B R B, PG Andere Gewinde auf Anfrage other thread sizes on request

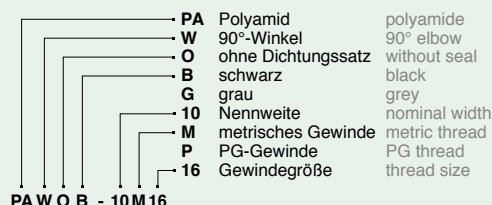
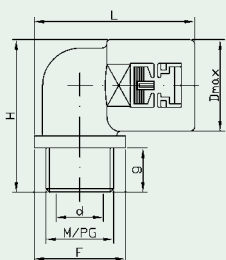
Bestell-Nr. grau grey	Article no schwarz black	für for NW	PG	d	g	D	L	H	F	kg/100 St. kg/100 pcs.	(VE) St. (PU) pcs.
VM B R G-10P09	VM B R B-10P09	10	09	10,0	11,0	21,1	56,3	37,6	20,5		30
VM B R G-10P11	VM B R B-10P11	10	11	9,9	11,0	21,1	58,1	38,1	24,0		30
VM B R G-10P13	VM B R B-10P13	10	13,5								30
VM B R G-12P11	VM B R B-12P11	12	11	12,0	11,0	24,3	58,8	41,0	23,5		30
		14*									
VM B R G-17P13	VM B R B-17P13	17	13,5	14,8	13,0	30,4	70,0	48,2	27,5	2,70	30
VM B R G-17P16	VM B R B-17P16	17	16	16,8	13,0	30,4	70,0	48,2	27,5	2,80	30
VM B R G-23P21	VM B R B-23P21	23	21	22,3	14,0	40,0	88,1	59,0	35,5	4,50	30
VM B R G-29P29	VM B R B-29P29	29	29	29,0	14,0	46,0	98,3	66,0	43,5	7,05	20
VM B R G-36P36	VM B R B-36P36	36	36	36,4	14,0	56,0	113,1	78,0	55,0	11,80	10
VM B R G-48P48	VM B R B-48P48	48	48	49,7	14,0	70,0	133,6	91,0	66,5		10

\*Armaturen für NW 14 mit Adapter PA W AB-14/17 möglich, siehe Seite 56 \* Connectors for NW 14 available combined with PA W AB-14/17, see page 56

# 90°-Winkelverschraubung mit Außengewinde

## 90° Elbow, male thread

24



### PA W O G / PA W O B, metr. Andere Gewinde auf Anfrage other thread sizes on request

Bestell-Nr. Article no	für for	M	d	g	D	L	H	F	kg/100 St.	(VE) St.	
grau grey	schwarz black	NW							kg/100 pcs.	(PU) pcs.	
PA S O G-07M101	PA S O B-07M101	07	10 x 1,0	6,8	10,0	17,2	43,8	42,8	17,0	0,87	50
PA S O G-07M12	PA S O B-07M12	07	12 x 1,5	6,9	10,0	17,2	44,5	42,8	18,5	0,89	50
PA S O G-07M16	PA S O B-07M16	07	16 x 1,5	7,0	10,0	17,2	46,5	42,8	22,5	0,89	50
PA S O G-07M20	PA S O B-07M20	07	20 x 1,5	7,0	10,0	17,2	47,5	42,8	24,5	0,93	50
PA W O G-10M12	PA W O B-10M12	10	12 x 1,5	8,3	10,5	18,0	39,3	33,5	20,0		50
PA W O G-10M16	PA W O B-10M16	10	16 x 1,5	11,0	10,5	18,0	40,3	33,5	22,0	0,70	50
PA W O G-10M20	PA W O B-10M20	10	20 x 1,5	10,8	11,0	18,0	41,5	35,0	24,5	0,80	50
14*											
PA W O G-12M16	PA W O B-12M16	12	16 x 1,5	11,7	11,0	20,8	42,0	36,5	21,0	0,88	50
PA W O G-12M20	PA W O B-12M20	12	20 x 1,5	13,7	11,0	20,8	43,8	36,5	24,5	0,90	50
PA W O G-17M20	PA W O B-17M20	17	20 x 1,5	16,0	13,0	27,0	47,5	45,0	27,0	1,26	50
PA W O G-17M25	PA W O B-17M25	17	25 x 1,5	17,2	13,0	27,0	47,5	45,0	29,0		50
PA W O G-23M25	PA W O B-23M25	23	25 x 1,5	20,3	14,0	35,0	65,5	54,0	36,0	2,60	30
PA W O G-29M32	PA W O B-29M32	29	32 x 1,5	27,0	14,0	41,8	73,3	60,9	41,5	3,60	30
PA W O G-36M40	PA W O B-36M40	36	40 x 1,5	33,5	14,0	51,0	86,3	70,0	51,5	6,09	10
PA W O G-48M50	PA W O B-48M50	48	50 x 1,5	42,3	14,0	63,8	102,5	82,3	64,5	9,40	10

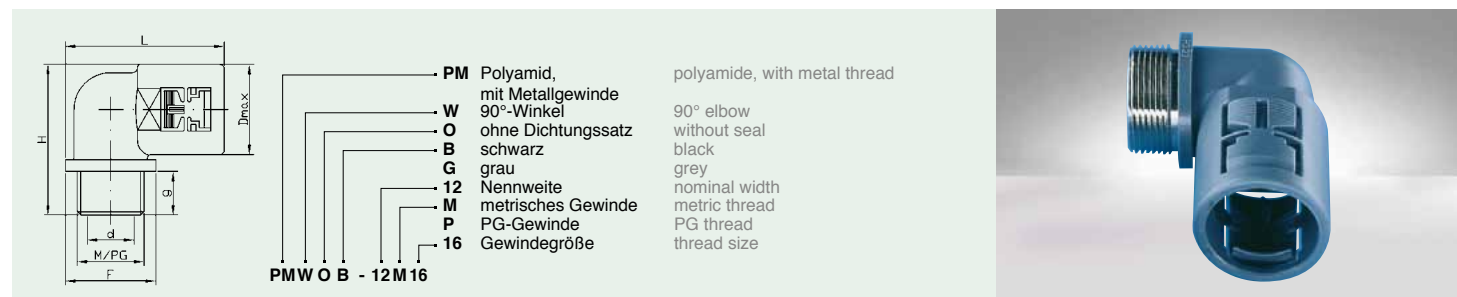
### PA W O G / PA W O B, PG Andere Gewinde auf Anfrage other thread sizes on request

Bestell-Nr. Article no	für for	PG	d	g	D	L	H	F	kg/100 St.	(VE) St.	
grau grey	schwarz black	NW							kg/100 pcs.	(PU) pcs.	
PA-W O G-07P07	PA-W O B-07P07	07	07	7,0	8,0	17,2	44,0	29,6	17,5	0,63	50
PA W O G-10P07	PA W O B-10P07	10	07	8,4	10,5	18,0	38,3	33,5	18,0	0,70	50
PA W O G-10P09	PA W O B-10P09	10	09	11,0	10,5	18,0	39,3	33,5	20,0	0,70	50
PA W O G-10P11	PA W O B-10P11	10	11	11,0	10,5	18,0	39,3	33,5	20,0	0,80	50
PA W O G-10P11K	PA W O B-10P11K	10	11	10,9	8,0	18,0	40,5	31,5	22,5	0,71	50
PA W O G-10P13	PA W O B-10P13	10	13,5	10,9	11,0	18,0	41,3	34,5	24,0	0,77	50
PA W O G-12P09	PA W O B-12P09	12	09	11,7	11,0	20,8	42,0	36,5	21,0	0,86	50
PA W O G-12P11	PA W O B-12P11	12	11	13,0	11,0	20,8	43,0	36,5	23,0	0,88	50
PA W O G-12P13	PA W O B-12P13	12	13,5	15,0	11,0	20,8	43,3	36,5	23,5	0,84	50
14*											
PA W O G-17P13	PA W O B-17P13	17	13,5	16,0	13,0	27,0	47,5	45,0	27,0	1,25	50
PA W O G-17P16	PA W O B-17P16	17	16	17,2	13,0	27,0	47,5	45,0	27,0	1,26	50
PA W O G-23P21	PA W O B-23P21	23	21	22,1	14,0	35,0	65,0	54,0	35,0	2,60	30
PA W O G-29P29	PA W O B-29P29	29	29	30,3	14,0	41,8	73,8	60,9	42,5	3,60	30
PA W O G-36P36	PA W O B-36P36	36	36	38,0	14,0	51,0	86,3	70,0	51,5	6,20	10
PA W O G-48P48	PA W O B-48P48	48	48	49,7	14,0	63,8	102,5	82,3	64,5	9,50	10

\*Armaturen für NW 14 mit Adapter PA W AB-14/17 möglich, siehe Seite 56 \* Connectors for NW 14 available combined with PA W AB-14/17, see page 56

# 90°-Winkelverschraubung mit Metall-Außengewinde

## 90° Elbow, male metal thread



### PM W O G / PM W O B, metr. Andere Gewinde auf Anfrage other thread sizes on request

Bestell-Nr. Article no grau grey	schwarz black	für for NW	M	d	g	Dmax	L	H	F	kg/100 St. kg/100 pcs.	(VE) St. (PU) pcs.
PM W O G-12M16	PM W O B-12M16	12	16 x 1,5	10,9	12,0	20,8	42,0	37,5	21,0	1,50	30
		14*									
PM W O G-17M20	PM W O B-17M20	17	20 x 1,5	15,4	12,0	27,0	47,8	44,0	27,5	2,10	30
PM W O G-23M25	PM W O B-23M25	23	25 x 1,5	19,9	14,0	35,0	65,5	54,0	36,0	4,30	30
PM W O G-29M32	PM W O B-29M32	29	32 x 1,5	26,8	14,0	41,8	73,8	60,9	42,5	6,50	20
PM W O G-36M40	PM W O B-36M40	36	40 x 1,5	29,7	14,0	51,0	86,0	70,5	51,0	11,37	10
PM W O G-48M50	PM W O B-48M50	48	50 x 1,5	37,0	18,0	63,8	101,0	87,8	61,5	9,50	10

### PM W O G / PM W O B, PG Andere Gewinde auf Anfrage other thread sizes on request

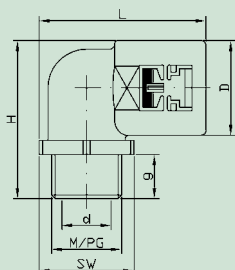
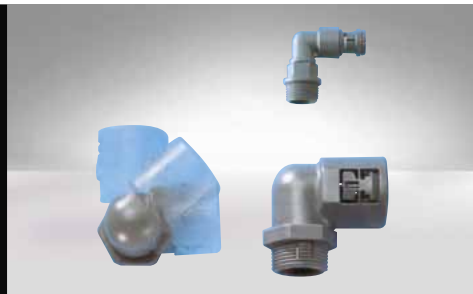
Bestell-Nr. Article no grau grey	schwarz black	für for NW	PG	d	g	Dmax	L	H	F	kg/100 St. kg/100 pcs.	(VE) St. (PU) pcs.
PM S O G-07P07	PM S O B-07P07	07	07	7,0	8,5	17,5	44,0	41,3	17,5	1,20	30
PM W O G-10P09	PM W O B-10P09	10	09	11,5	12,0	18,0	38,5	35,0	18,5	1,20	30
PM W O G-12P11	PM W O B-12P11	12	11	13,4	12,0	20,8	42,0	37,5	21,0	1,80	30
		14*									
PM W O G-17P13	PM W O B-17P13	17	13,5	15,4	12,0	27,0	47,8	44,0	27,5	2,40	30
PM W O G-17P16	PM W O B-17P16	17	16	17,5	12,0	27,0	47,8	44,0	27,5	2,40	30
PM W O G-23P21	PM W O B-23P21	23	21	22,4	14,0	35,0	65,2	54,0	35,5	4,60	30
PM W O G-29P29	PM W O B-29P29	29	29	30,4	14,0	41,8	74,3	60,9	43,5	6,80	20
PM W O G-36P36	PM W O B-36P36	36	36	40,4	17,0	51,0	86,6	74,5	52,0	11,30	10
PM W O G-48P48	PM W O B-48P48	48	48	50,4	17,0	63,8	103,0	86,8	65,5	19,70	10

\*Armaturen für NW 14 mit Adapter PA W AB-14/17 möglich, siehe Seite 56 \* Connectors for NW 14 available combined with PA W AB-14/17, see page 56

# 90°-Winkelverschraubung mit Außengewinde

## 90° Swivelable elbow

30



90°-Winkelverschraubung auf beliebige Abgangsrichtung einstellbar, ohne zusätzliche Kontermutter.

90° elbow can be turned in any direction, without additional nut.

### PA S O G / PA S O B, metr.

Bestell-Nr. grau grey	Article no schwarz black	für for NW	M	d	g	D	L	H	SW	kg/100 St. kg/100 pcs.	(VE) St. (PU) pcs.
PA S O G-07M101	PA S O B-07M101	07	10 x 1,0	6,8	10,0	17,2	43,8	42,8	15		50
PA S O G-07M12	PA S O B-07M12	07	12 x 1,5	6,9	10,0	17,2	44,5	42,8	15	0,87	50
PA S O G-07M16	PA S O B-07M16	07	16 x 1,5	7,0	10,0	17,2	46,5	42,8	15	0,89	50
PA S O G-07M20	PA S O B-07M20	07	20 x 1,5	7,0	10,0	17,2	47,5	42,8	15	0,93	50
VP S R G-10M16	VP S R B-10M16	10	16 x 1,5	8,3	9,0	21,1	56,0	37,5	20		50
VP S R G-10M20	VP S R B-10M20	10	20 x 1,5	10,0	9,0	21,1	58,0	37,5	24		50
VP S R G-12M20	VP S R B-12M20	12	20 x 1,5	12,0	9,0	23,9	59,0	41,2	24		50
PA S O G-17M25	PA S O B-17M25	17	25 x 1,5	16,5	10,0	27,0	50,0	45,0	32		50
PA S O G-23M32	PA S O B-23M32	23	32 x 1,5	21,5	11,0	35,0	67,5	55,0	41	3,15	50

### PA S O G / PA S O B, PG

Bestell-Nr. grau grey	Article no schwarz black	für for NW	PG	d	g	D	L	H	SW	kg/100 St. kg/100 pcs.	(VE) St. (PU) pcs.
PA S O G-07P07	PA S O B-07P07	07	07	7,0	8,2	17,2	44,1	41,0	15	0,79	50
PA S O G-07P09	PA S O B-07P09	07	09	7,0	9,7	17,2	44,6	42,5	15	0,81	50
PA S O G-07P11	PA S O B-07P11	07	11	7,0	9,7	17,2	46,1	42,5	15	0,91	50
PA S O G-07P13	PA S O B-07P13	07	13,5	7,0	9,7	17,2	46,1	42,5	15	0,95	50
PA S O G-17P16	PA S O B-17P16	17	16	16,5	10,0	27,0	47,5	45,0	27	1,44	50
PA S O G-23P21	PA S O B-23P21	23	21	21,5	11,0	35,0	63,0	55,0	32	2,85	30

# 90°-Winkelflansch 90° Elbow flange

<b>MS</b>	Messing, vernickelt	brass, nickel-plated
<b>PA</b>	Polyamid	polyamide
<b>F</b>	Winkel mit Flansch	elbow flange
<b>G</b>	gerade Verschraubung	straight connector
<b>O</b>	ohne Dichtungssatz	without seal
<b>R</b>	mit rohreseitiger Dichtung	with seal on tube
<b>B</b>	schwarz	black
<b>G</b>	grau	grey
<b>M</b>	metallisch	metallic
<b>17</b>	Nennweite	nominal width
<b>M</b>	metrisches Gewinde	metric thread
<b>P</b>	PG-Gewinde	PG thread
<b>16</b>	Gewindegröße	thread size

PA F O G - 17  
MSG R M - 17 P 16

## PA F O G / PA F O B

Bestell-Nr. Article no grau grey	schwarz black	für for NW	Durchlaßöff. pass through	L	B	D	C	E	F	d	H	h	kg/100 St. kg/100 pcs.	(VE) St. (PU) pcs.
PA F O G-07	PA F O B-07	07	14 x 6,4	30,4	32,0	14,0	16,0	*	23,0	4,0	12,0	5,0	0,4	50
PA F O G-10	PA F O B-10	10	16 x 9,6	32,8	35,0	17,0	17,5	*	26,0	4,0	15,0	6,5	0,5	50
PA F O G-12	PA F O B-12	12	17 x 12,2	35,2	38,0	20,0	19,0	*	29,0	4,0	18,0	8,0	0,6	50
PA F O G-17	PA F O B-17	17	22 x 17,5	51,0	45,0	27,0	22,5	*	35,5	5,5	34,0	20,5	1,6	30
PA F O G-23	PA F O B-23	23	28 x 21,5	69,5	62,0	35,0	31,0	*	53,0	6,5	41,0	23,5	3,3	30
PA F O G-29	PA F O B-29	29	37 x 30,0	78,0	67,0	41,8	22,0	36,0	54,0	6,5	47,9	27,0	4,8	20
PA F O G-36	PA F O B-36	36	57 x 38,0	103,0	85,0	51,0	29,0	30,0	73,0	6,5	57,0	31,5	7,9	10
PA F O G-48	PA F O B-48	48	68 x 50,0	119,5	88,0	63,8	44,0	30,0	72,0	6,5	69,8	37,9	12,5	10

\* 2-Lochbefestigung Winkelflansch für Nennweite 70 und 90 siehe Seite 50.  
\* 2-hole fastener 90° elbow flange for NW 70 and 90: see page 50.

H = Gesamthöhe H = total height  
h = Höhe bis Rohrmittle h = height till middle of tube

### MSG R M...

#### Ganzmetall-Verschraubung für extreme Beanspruchung Full metal Connector for extreme strain

Diese mehrteilige Verschraubung ist auch mit Zugentlastung lieferbar. Sonderwünsche bezüglich der äußeren Maße können berücksichtigt werden. This multi-component connector is also available with strain relief. Special wishes as to the outer measurements can be considered.



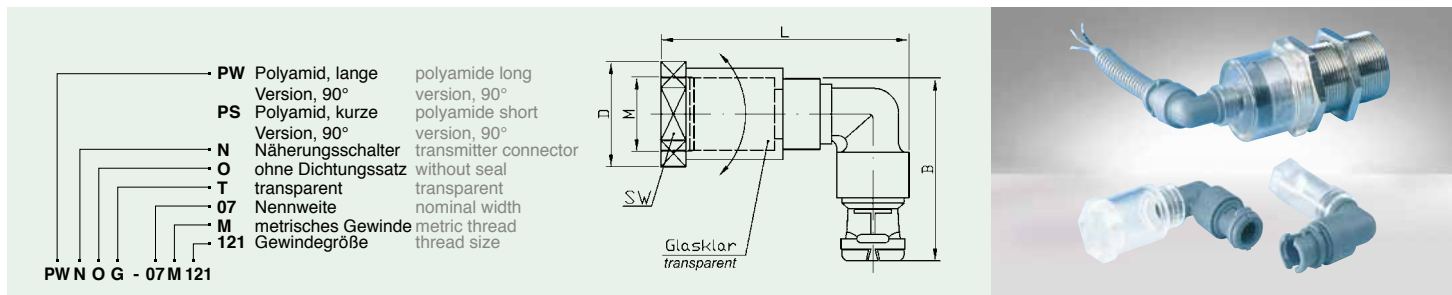
## MSG R M, metr.

Bestell-Nr. Article no	für for NW	M	g	D	L	SW	kg/100 St. kg/100 pcs.	(VE) St. (PU) pcs.
MSG R M-10M16	10	16 x 1,5	8	23,9	28,5	22		10
MSG R M-12M20	12	20 x 1,5	8	29,6	30,0	27		10
MSG R M-17M25	17	25 x 1,5	10	35,0	39,5	32		10
MSG R M-23M32	23	32 x 1,5	10	39,6	39,0	36		10
MSG R M-29M40	29	40 x 1,5	10	50,5	38,0	46		10
MSG R M-36M50	36	50 x 1,5	14	60,8	50,5	55		1
MSG R M-48M63	48	63 x 1,5	14	77,0	53,5	70		1

## MSG R M, PG

Bestell-Nr. Article no	für for NW	PG	g	D	L	SW	kg/100 St. kg/100 pcs.	(VE) St. (PU) pcs.
MSG R M-10P09	10	09	8	23,9	28,5	22	-	10
MSG R M-12P11	12	11	8	29,6	30,0	27	-	10
MSG R M-17P16	17	16	10	35,0	39,5	32	12,9	10
MSG R M-23P21	23	21	10	39,6	39,0	36	12,4	10
MSG R M-29P29	29	29	10	50,5	38,0	46	20,0	10
MSG R M-36P36	36	36	14	60,8	50,5	55	43,7	1
MSG R M-48P48	48	48	14	77,0	53,5	70	43,8	1

## 90°-Winkelkupplungsstück für Initiatoren 90° elbow joint for transmitter



**PW** Polyamid, lange Version, 90°  
**PS** Polyamid, kurze Version, 90°  
**N** Näherungsschalter ohne Dichtungssatz transparent  
**O** transparent  
**T** transparent  
**07** Nennweite  
**M** metrisches Gewinde  
**121** Gewindegröße

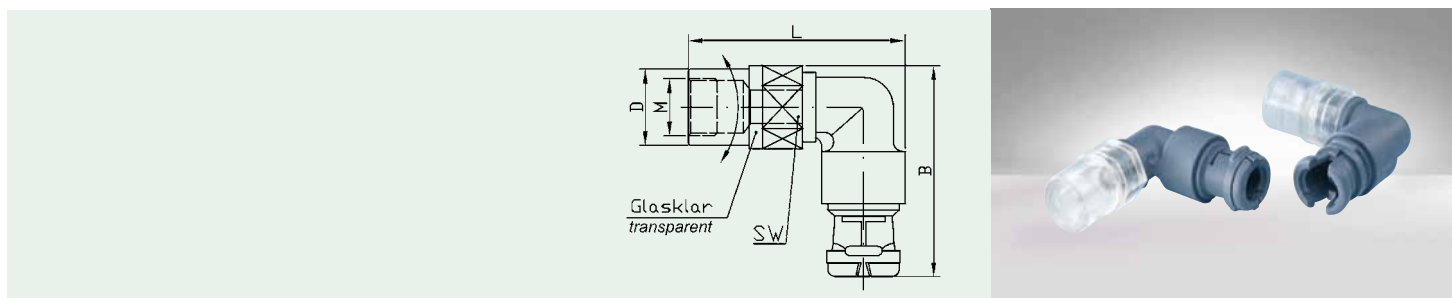
polyamide long version, 90°  
 polyamide short version, 90°  
 transmitter connector without seal transparent  
 transparent  
 transparent  
 nominal width  
 metric thread  
 thread size

### PW N O G Typ: lang, 90° Winkel type: long, 90° elbow

Bestell-Nr. grau grey	Article no	für for NW	Gewinde thread size	SW	D <sub>max</sub>	L	B	(VE) St. (PU) pcs.
PW N O G-07M081		07	M08x1	12	17,5	59,5	44	50
PW N O G-07M121		07	M12x1	15	17,5	59,5	44	50
PW N O G-07M181		07	M18x1	22	25	59,5	44	50
PW N O G-07M301		07	M30x1,5	36	41,5	59,5	44	50

### PW N O B Typ: lang, 90° Winkel type: long, 90° elbow

Bestell-Nr. schwarz black	Article no	für for NW	Gewinde thread size	SW	D <sub>max</sub>	L	B	(VE) St. (PU) pcs.
PW N O B-07M081		07	M08x1	12	17,5	59,5	44	50
PW N O B-07M121		07	M12x1	15	17,5	59,5	44	50
PW N O B-07M181		07	M18x1	22	25	59,5	44	50
PW N O B-07M301		07	M30x1,5	36	41,5	59,5	44	50



### PS N O G Typ: kurz, 90° Winkel type: short, 90° elbow

Bestell-Nr. grau grey	Article no	für for NW	Gewinde thread size	SW	D <sub>max</sub>	L	B	(VE) St. (PU) pcs.
PS N O G-07M081		07	M08x1	15	17,5	45,5	44	50
PS N O G-07M121		07	M12x1	15	17,5	45,5	44	50

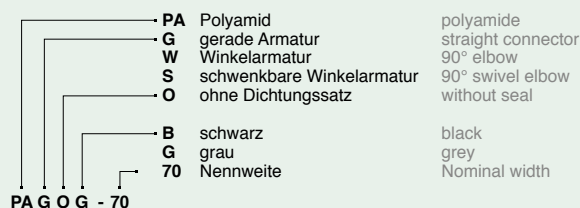
### PS N O B Typ: kurz, 90° Winkel type: short, 90° elbow

Bestell-Nr. schwarz black	Article no	für for NW	Gewinde thread size	SW	D <sub>max</sub>	L	B	(VE) St. (PU) pcs.
PS N O B-07M081		07	M08x1	15	17,5	45,5	44	50
PS N O B-07M121		07	M12x1	15	17,5	45,5	44	50

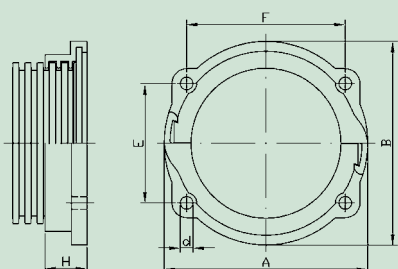
# Anschlußarmaturen für Wellrohre, Nennweiten 52 bis 90

## Connectors for tubings, nominal width 52 to 90

50



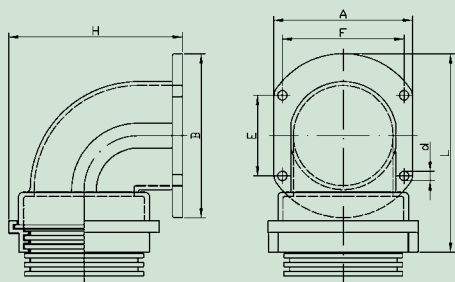
### Anschlußarmatur gerade Straight Connector PA G O G/PA G O B



Bestell-Nr. grau grey	Article no schwarz black	NW	A	B	H	E	F	d	(VE) St. (PU) pcs.
PA G O G-52	PA G O B-52	52	77	74	17	60	66	6,5	1
PA G O G-70	PA G O B-70	70	103	103	21	61	81	6,5	1
PA G O G-95	PA G O B-95	90	130	130	28	74	109	6,5	1

Passende Dichtungen: von ZK D R B-52 bis ZK D R B-95  
 suitable sealings: from ZK D R B-52 to ZK D R B-95

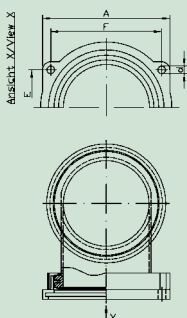
### 90° Anschlußarmatur 90° elbow with flange PA W O G/PA W O B



Bestell-Nr. grau grey	Article no schwarz black	NW	A	B	H	E	F	L	d	(VE) St. (PU) pcs.
PA W O G-52	PA W O B-52	52	74	80	94	66	60	105	6,5	1
PA W O G-70	PA W O B-70	70	96	112	120	60-61	80-81	136	6,5	1
PA W O G-95	PA W O B-95	90	126	143	145	74-75	108-110	173	6,5	1

Passende Dichtungen: am Schutzrohr NI F S B-52/70/95 am Flansch ZK D R B-52/70/95  
 suitable sealings: on tubing NI F S B-52/70/95 on Flange ZK D R B-52/70/95

### Drehbarer 90°-Winkelanschluß 90° Swivelable elbow PA S O G/PA S O B



Bestell-Nr. grau grey	Article no schwarz black	NW	A	H	E	F	L	d	(VE) St. (PU) pcs.
PA S O G-52	PA S O B-52	52	77	94	60	66	96	6,5	1
PA S O G-70	PA S O B-70	70	103	128	61	81	131	6,5	1
PA S O G-95	PA S O B-95	90	130	166	74	110	166	6,5	1

Rohrschellen ME S 2 B passend zu Wellrohr-Nennweiten 52,70 und 90 finden Sie auf Seite 16.  
 Tube clamp ME S 2 B suitable for corrugated tubings NW 52, NW 70 and NW 95, refer to page 16.



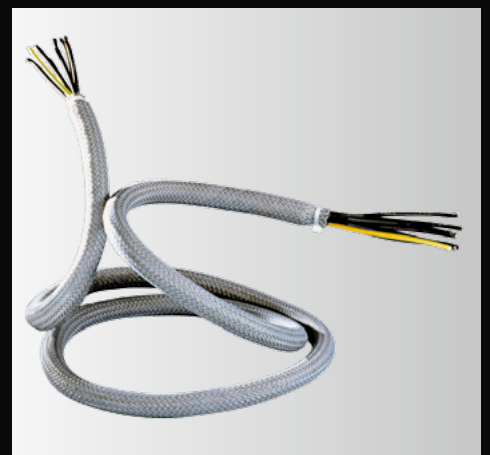
## Kabelschutz auf einen Blick Das REIKU®-System

Cable Protection at one Sight  
The REIKU®-System

**Kabelschutz aus Polyamid**  
**Wellrohre und**  
**Anschlußarmaturen**  
**Systemummantelung mit**  
**Gleitverschlusstechnik**  
**GL-Hitzeschutz**  
**Feingeflechtschläuche**



**Cable Protection**  
**made of Polyamide**  
**Conduits and Connectors**  
**GL-Heat Protection**  
**System Sheathing with**  
**Zip Closure**  
**Mesh Tubings**



RE090907PS-KATALOG