



REIKU[®]-System

HighTech Kabelschutz

HighTech Cable-Protection

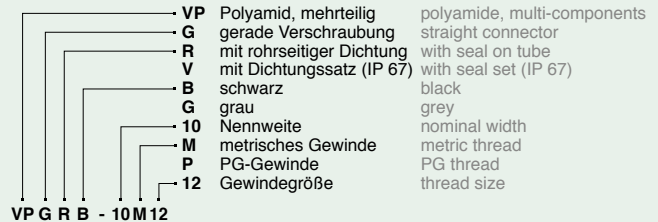
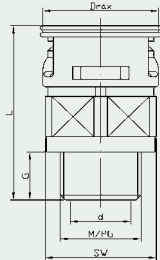


2010/11
www.reiku.de

Gerade Verschraubung mit integrierter Manschetten-Dichtung und Außengewinde, IP 67 rohrseitig

Straight Connector with integrated seal, male thread, IP 67 on tube

18



VP G R G / VP G R B, metr. Andere Gewinde auf Anfrage other thread sizes on request

Bestell-Nr. Article no	für for	M	d	g	Dmax	L	SW	kg/100 St.	(VE) St.	
grau grey	schwarz black	NW						kg/100 pcs.	(PU) pcs.	
VP G R G-10M12	VP G R B-10M12	10	12 x 1,5	8,0	9,5	21,1	34,0	19	0,59	50
VP G R G-10M16	VP G R B-10M16	10	16 x 1,5	10,2	9,5	21,1	34,0	19	0,55	50
VP G R G-10M20	VP G R B-10M20	10	20 x 1,5	10,9	12,0	26,5	37,0	19	0,55	50
VP G R G-12M16	VP G R B-12M16	12	16 x 1,5	12,1	9,5	24,0	35,0	22	0,66	50
VP G R G-12M20	VP G R B-12M20	12	20 x 1,5	12,8	12,5	24,0	38,0	22	0,68	50
		14*								
VP G R G-17M20	VP G R B-17M20	17	20 x 1,5	16,0	13,0	30,4	42,5	27	1,20	50
VP G R G-17M25	VP G R B-17M25	17	25 x 1,5	17,9	12,0	30,4	41,5	27	1,05	50
VP G R G-17M32	VP G R B-17M32	17	32 x 1,5	17,8	12,0	35,5	41,5	27	1,20	50
VP G R G-23M25	VP G R B-23M25	23	25 x 1,5	21,0	14,0	40,0	52,5	36	2,10	30
VP G R G-23M32	VP G R B-23M32	23	32 x 1,5	22,7	14,0	40,0	52,5	36	2,02	30
VP G R G-29M32	VP G R B-29M32	29	32 x 1,5	26,9	14,0	46,0	53,5	41	2,70	30
VP G R G-29M40	VP G R B-29M40	29	40 x 1,5	29,0	14,0	46,5	53,5	41	2,70	30
VP G R G-36M40	VP G R B-36M40	36	40 x 1,5	34,3	14,0	57,0	59,0	50	6,50	10
VP G R G-36M50	VP G R B-36M50	36	50 x 1,5	38,3	14,0	57,0	59,0	50	6,50	10
VP G R G-48M50	VP G R B-48M50	48	50 x 1,5	44,2	14,0	73,0	64,5	65	8,40	10
VP G R G-48M63	VP G R B-48M63	48	63 x 1,5	49,5	13,5	73,0	63,5	65	8,40	10

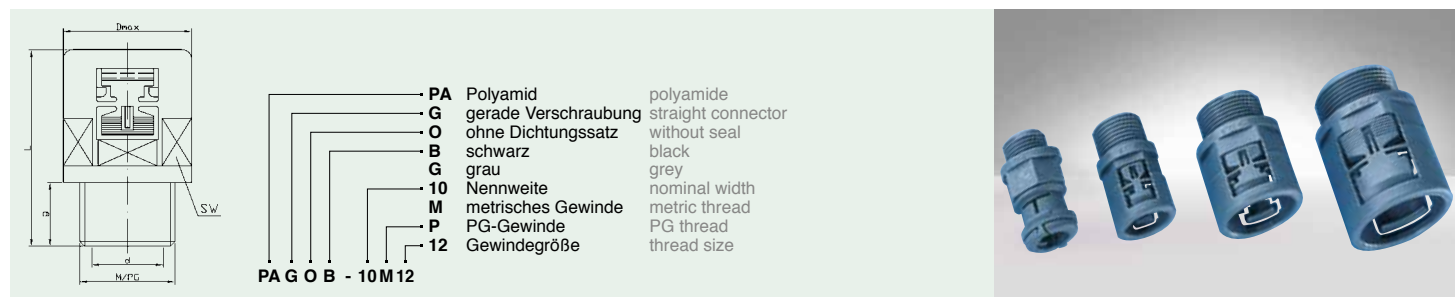
VP G R G / VP G R B, PG

Bestell-Nr. Article no	für for	PG	d	g	Dmax	L	SW	kg/100 St.	(VE) St.	
grau grey	schwarz black	NW						kg/100 pcs.	(PU) pcs.	
VP G R G-10P07	VP G R B-10P07	10	07	8,5	12,0	21,1	36,5	19	0,48	50
VP G R G-10P07K	VP G R B-10P07K	10	07	7,9	8,0	21,1	32,5	19	0,45	50
VP G R G-10P09	VP G R B-10P09	10	09	11,0	12,0	21,1	36,5	19	0,48	50
VP G R G-10P09K	VP G R B-10P09K	10	09	11,0	8,0	21,1	32,5	19	0,47	50
VP G R G-10P11	VP G R B-10P11	10	11	10,0	12,0	21,1	36,5	19	0,59	50
VP G R G-10P11K	VP G R B-10P11K	10	11	10,5	8,0	21,1	32,5	19	0,50	50
VP G R G-10P13	VP G R B-10P13	10	13,5	11,0	12,0	23,5	37,0	19	0,55	50
VP G R G-12P09	VP G R B-12P09	12	09	11,4	12,5	24,0	38,0	22	0,60	50
VP G R G-12P11	VP G R B-12P11	12	11	13,1	12,5	24,0	38,0	22	0,65	50
VP G R G-12P11K	VP G R B-12P11K	12	11	13,5	8,0	24,0	33,5	22	0,62	50
VP G R G-12P13	VP G R B-12P13	12	13,5	12,4	12,5	24,0	38,0	22	0,66	50
		14*								
VP G R G-17P11	VP G R B-17P11	17	11	15,4	12,5	30,4	42,0	27	1,10	50
VP G R G-17P13	VP G R B-17P13	17	13,5	17,5	13,0	30,4	42,5	27	1,10	50
VP G R G-17P16	VP G R B-17P16	17	16	15,4	13,0	30,4	42,5	27	1,10	50
VP G R G-17P16K	VP G R B-17P16K	17	16	17,1	8,0	30,4	37,5	27	0,90	50
VP G R G-17P21	VP G R B-17P21	17	21	17,5	12,5	33,0	42,0	27	1,20	50
VP G R G-23P16	VP G R B-23P16	23	16	17,3	14,0	40,0	52,5	36	2,10	50
VP G R G-23P21	VP G R B-23P21	23	21	22,0	14,0	40,0	52,5	36	2,10	30
VP G R G-29P29	VP G R B-29P29	29	29	30,2	14,0	46,0	53,5	41	2,70	30
VP G R G-36P29	VP G R B-36P29	36	29	31,0	14,0	57,0	59,0	50	4,07	10
VP G R G-36P36	VP G R B-36P36	36	36	38,0	14,0	57,0	59,0	50	6,50	10
VP G R G-48P42	VP G R B-48P42	48	42	46,5	15,0	73,0	65,0	65	8,40	10
VP G R G-48P48	VP G R B-48P48	48	48	49,0	14,5	73,0	64,5	65	8,40	10

*Armaturen für NW 14 mit Adapter PA W AB-14/17 möglich, siehe Seite 56 * Connectors for NW 14 available combined with PA W AB-14/17, see page 56

Gerade Verschraubung mit Außengewinde

Straight Connector, male thread



PA G O G / PA G O, metr. Andere Gewinde auf Anfrage other thread sizes on request

Bestell-Nr. Article no	für for	M	d	g	Dmax	L	SW	kg/100 St.	(VE) St.	
grau grey	schwarz black	NW						kg/100 pcs.	(PU) pcs.	
PA G O G-07M101	PA G O B-07M101	07	10 x 1,0	6,8	10,0	17,2	36,3	15	0,29	50
PA G O G-07M12	PA G O B-07M12	07	12 x 1,5	6,9	10,0	18,5	36,3	15	0,29	50
PA G O G-07M16	PA G O B-07M16	07	16 x 1,5	7,0	10,0	22,5	36,3	15	0,29	50
PA G O G-07M20	PA G O B-07M20	07	20 x 1,5	7,0	10,0	24,5	36,3	15	0,29	50
PA G O G-10M12	PA G O B-10M12	10	12 x 1,5	8,0	9,5	18,5	33,5	15	0,44	50
PA G O G-10M16	PA G O B-10M16	10	16 x 1,5	10,2	9,5	18,0	33,5	15	0,40	50
PA G O G-10M20	PA G O B-10M20	10	20 x 1,5	10,9	12,0	26,5	36,5	15	0,40	50
PA G O G-12M16	PA G O B-12M16	12	16 x 1,5	12,1	9,5	21,8	33,5	17	0,42	50
PA G O G-12M20	PA G O B-12M20	12	20 x 1,5	12,8	12,5	27,0	36,5	17	0,48	50
14*										
PA G O G-17M20	PA G O B-17M20	17	20 x 1,5	16,0	13,0	27,5	41,0	24	0,75	50
PA G O G-17M25	PA G O B-17M25	17	25 x 1,5	17,9	12,0	29,0	40,0	24	0,69	50
PA G O G-17M32	PA G O B-17M32	17	32 x 1,5	17,8	12,0	35,0	40,0	24		50
PA G O G-23M25	PA G O B-23M25	23	25 x 1,5	21,0	14,0	36,5	53,0	32	1,55	30
PA G O G-23M32	PA G O B-23M32	23	32 x 1,5	22,7	14,0	38,5	53,0	32	1,46	30
PA G O G-29M32	PA G O B-29M32	29	32 x 1,5	26,9	14,0	42,0	54,0	38	2,10	30
PA G O G-29M40	PA G O B-29M40	29	40 x 1,5	29,0	14,0	46,5	54,0	38	2,10	30
PA G O G-36M40	PA G O B-36M40	36	40 x 1,5	34,3	14,0	52,5	57,5	46	2,91	10
PA G O G-36M50	PA G O B-36M50	36	50 x 1,5	38,3	14,0	56,5	57,5	46	2,91	10
PA G O G-48M50	PA G O B-48M50	48	50 x 1,5	44,2	14,0	65,5	62,0	60	4,65	10
PA G O G-48M63	PA G O B-48M63	48	63 x 1,5	49,5	13,5	69,0	61,0	60	4,65	10

PA G O G / PA G O B, PG

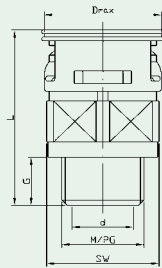
Bestell-Nr. Article no	für for	PG	d	g	Dmax	L	SW	kg/100 St.	(VE) St.	
grau grey	schwarz black	NW						kg/100 pcs.	(PU) pcs.	
PA G O G-07P07	PA G O B-07P07	07	07	7,0	8,2	17,5	34,5	15	0,34	50
PA G O G-07P09	PA G O B-07P09	07	09	7,0	9,7	18,5	36,0	15	0,34	50
PA G O G-07P11	PA G O B-07P11	07	11	7,0	9,7	21,5	36,0	15	0,36	50
PA G O G-07P13	PA G O B-07P13	07	13,5	7,0	9,7	24,0	36,0	15	0,38	50
PA G O G-10P07	PA G O B-10P07	10	07	8,5	12,0	18,0	36,0	15	0,32	50
PA G O G-10P09	PA G O B-10P09	10	09	11,0	12,0	18,5	36,0	15	0,33	50
PA G O G-10P11	PA G O B-10P11	10	11	10,0	12,0	20,0	36,0	15	0,44	50
PA G O G-10P13	PA G O B-10P13	10	13,5	11,0	12,0	23,5	36,5	15	0,40	50
PA G O G-12P09	PA G O B-12P09	12	09	11,4	12,5	20,8	36,5	17	0,36	50
PA G O G-12P11	PA G O B-12P11	12	11	13,1	12,5	21,0	36,5	17	0,42	50
PA G O G-12P13	PA G O B-12P13	12	13,5	12,4	12,5	22,5	36,5	17	0,45	50
14*										
PA G O G-17P11	PA G O B-17P11	17	11	15,4	12,5	27,0	40,5	24	0,73	50
PA G O G-17P13	PA G O B-17P13	17	13,5	17,5	13,0	27,0	41,0	24	0,70	50
PA G O G-17P16	PA G O B-17P16	17	16	15,4	13,0	27,0	41,0	24	0,75	50
PA G O G-17P21	PA G O B-17P21	17	21	17,5	12,5	33,0	41,5	24	0,90	50
PA G O G-23P16	PA G O B-23P16	23	16	17,3	14,0	35,0	53,0	32	1,50	50
PA G O G-23P21	PA G O B-23P21	23	21	22,0	14,0	35,0	53,0	32	1,55	30
PA G O G-29P29	PA G O B-29P29	29	29	30,2	14,0	42,0	54,0	38	2,10	30
PA G O G-36P29	PA G O B-36P29	36	29	31,0	14,0	52,0	57,5	46	2,70	10
PA G O G-36P36	PA G O B-36P36	36	36	38,0	14,0	51,5	57,5	46	3,30	10
PA G O G-48P42	PA G O B-48P42	48	42	46,5	15,0	65,0	62,5	60		10
PA G O G-48P48	PA G O B-48P48	48	48	49,0	14,5	64,5	62,0	60	5,20	10

*Armaturen für NW 14 mit Adapter PA W AB-14/17 möglich, siehe Seite 56 * Connectors for NW 14 available combined with PA W AB-14/17, see page 56

Gerade Verschraubung mit integrierter Manschetten-Dichtung und Metall-Außengewinde, innen isoliert, IP 67 rohrseitig

Straight Connector with integrated seal, male metal thread, IP 67 on tube

20



- VM Polyamid, mehrteilig, mit Metallgewinde
 - G gerade Verschraubung mit rohrseitiger Dichtung mit Dichtungssatz (IP 67)
 - R schwarz
 - V grau
 - B Nennweite
 - G metrisches Gewinde
 - 12 PG-Gewinde
 - M Gewindegröße
- polyamide, multi-components, with metal thread straight connector with seal on tube with seal set (IP 67) black grey nominal width metric thread PG thread thread size

VM G R G / VM G R B, metr. Andere Gewinde auf Anfrage other thread sizes on request

Bestell-Nr. grau grey	Article no schwarz black	für for NW	M	d	g	Dmax	L	SW	kg/100 St. kg/100 pcs.	(VE) St. (PU) pcs.
VM G R G-10M16	VM G R B-10M16	10	16 x 1,5	10,8	12,0	21,1	37,5	19		30
VM G R G-10M20	VM G R B-10M20	10	20 x 1,5	10,9	12,0	25,0	38,0	19	0,92	30
VM G R G-12M16	VM G R B-12M16	12	16 x 1,5	10,8	12,0	24,0	39,0	22	1,63	30
VM G R G-12M20	VM G R B-12M20	12	20 x 1,5	10,6	12,0	25,0	39,0	22	1,65	30
		14*								
VM G R G-17M20	VM G R B-17M20	17	20 x 1,5	15,4	12,0	30,4	41,5	27	2,30	30
VM G R G-17M25	VM G R B-17M25	17	25 x 1,5	17,7	14,0	32,0	43,5	27	2,35	30
VM G R G-23M25	VM G R B-23M25	23	25 x 1,5	19,7	14,0	40,0	52,5	36	4,24	30
VM G R G-23M32	VM G R B-23M32	23	32 x 1,5	24,6	14,0	40,0	52,5	36	4,18	30
VM G R G-29M32	VM G R B-29M32	29	32 x 1,5	26,9	14,0	46,0	53,5	41	6,18	20
VM G R G-29M40	VM G R B-29M40	29	40 x 1,5	29,0	14,0	46,5	53,5	41	6,09	20
VM G R G-36M40	VM G R B-36M40	36	40 x 1,5	29,8	14,0	57,0	60,0	50	9,00	10
VM G R G-36M50	VM G R B-36M50	36	50 x 1,5	35,7	18,0	60,5	64,5	50	11,56	10
VM G R G-48M50	VM G R B-48M50	48	50 x 1,5							10
VM G R G-48M63	VM G R B-48M63	48	63 x 1,5	46,0	15,5	73,0	69,0	65	15,52	10

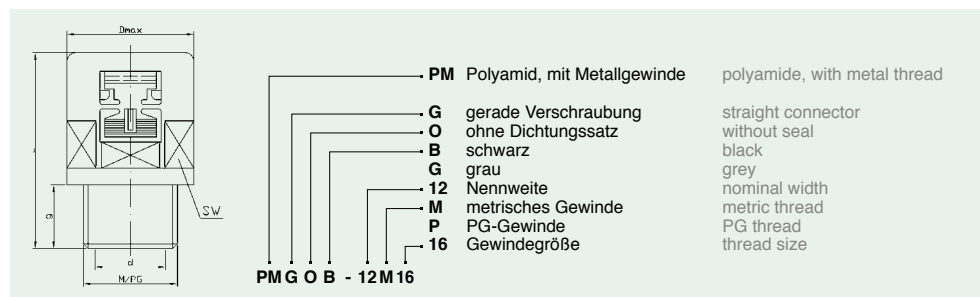
VM G R G / VM G R B, PG Andere Gewinde auf Anfrage other thread sizes on request

Bestell-Nr. grau grey	Article no schwarz black	für for NW	PG	d	g	Dmax	L	SW	kg/100 St. kg/100 pcs.	(VE) St. (PU) pcs.
VM G R G-10P09	VM G R B-10P09	10	09	10,5	12,0	21,1	37,5	19	1,05	30
VM G R G-12P11	VM G R B-12P11	12	11	13,4	12,0	24,0	38,5	22	1,63	30
		14*								
VM G R G-17P13	VM G R B-17P13	17	13,5	15,4	12,0	30,4	41,5	27	2,15	30
VM G R G-17P16	VM G R B-17P16	17	16	17,5	12,0	30,4	41,5	27	2,30	30
VM G R G-23P21	VM G R B-23P21	23	21	22,4	14,0	40,0	52,5	36	4,24	30
VM G R G-29P29	VM G R B-29P29	29	29	30,2	14,0	46,0	53,5	41	6,18	20
VM G R G-36P36	VM G R B-36P36	36	36	36,0	17,0	57,0	63,5	50	11,60	10
VM G R G-48P48	VM G R B-48P48	48	48	47,0	17,0	73,0	68,5	65	18,40	10

*Armaturen für NW 14 mit Adapter PA W AB-14/17 möglich, siehe Seite 56 * Connectors for NW 14 available combined with PA W AB-14/17, see page 56

Gerade Verschraubung mit Metall-Außengewinde

Straight Connector, male metal thread



PM G O G / PM G O B, metr. Andere Gewinde auf Anfrage other thread sizes on request

Bestell-Nr. Article no	für for	M	d	g	D _{max}	L	SW	kg/100 St.	(VE) St.
grau grey	schwarz black	NW						kg/100 pcs.	(PU) pcs.
PM G O G-10M16	PM G O B-10M16	10	16 x 1,5	10,8	12,0	21,0	37,0	15	30
PM G O G-10M20	PM G O B-10M20	10	20 x 1,5	10,9	12,0	25,0	37,5	15	0,95
PM G O G-12M16	PM G O B-12M16	12	16 x 1,5	10,8	12,0	21,0	37,5	17	1,40
PM G O G-12M20	PM G O B-12M20	12	20 x 1,5	10,6	12,0	25,0	37,5	17	1,35
		14*							
PM G O G-17M20	PM G O B-17M20	17	20 x 1,5	15,4	12,0	27,5	40,0	24	2,00
PM G O G-17M25	PM G O B-17M25	17	25 x 1,5	17,7	14,0	32,0	42,0	24	1,94
PM G O G-23M25	PM G O B-23M25	23	25 x 1,5	19,7	14,0	36,0	53,0	32	3,70
PM G O G-23M32	PM G O B-23M32	23	32 x 1,5	24,6	14,0	39,0	53,0	32	3,68
PM G O G-29M32	PM G O B-29M32	29	32 x 1,5	26,8	14,0	42,0	54,0	38	5,30
PM G O G-29M40	PM G O B-29M40	29	40 x 1,5	28,7	14,0	51,0	54,0	38	5,46
PM G O G-36M40	PM G O B-36M40	36	40 x 1,5	29,8	14,0	51,5	58,5	46	10
PM G O G-36M50	PM G O B-36M50	36	50 x 1,5	35,7	18,0	60,5	63,0	46	10,42
PM G O G-48M63	PM G O B-48M63	48	63 x 1,5	46,0	15,5	70,0	66,5	60	15,95

PM G O G / PM G O B, PG Andere Gewinde auf Anfrage other thread sizes on request

Bestell-Nr. Article no	für for	PG	d	g	D _{max}	L	SW	kg/100 St.	(VE) St.
grau grey	schwarz black	NW						kg/100 pcs.	(PU) pcs.
PM G O G-07P07	PM G O B-07P07	07	7,3	8,5	17,5	34,8	15	0,78	50
PM G O G-10P09	PM G O B-10P09	10	10,5	12,0	18,5	37,0	15	0,90	30
PM G O G-12P11	PM G O B-12P11	12	13,4	12,0	21,0	37,0	17	1,40	30
		14*							
PM G O G-17P13	PM G O B-17P13	17	13,5	15,4	12,0	27,5	40,0	24	1,85
PM G O G-17P16	PM G O B-17P16	17	16	17,5	12,0	27,5	40,0	24	2,00
PM G O G-23P21	PM G O B-23P21	23	21	22,4	14,0	35,5	53,0	32	3,70
PM G O G-29P29	PM G O B-29P29	29	29	28,0	14,0	42,5	54,0	38	5,30
PM G O G-36P36	PM G O B-36P36	36	36	36,0	17,0	52,0	62,0	46	8,40
PM G O G-48P48	PM G O B-48P48	48	48	47,0	17,0	65,0	66,0	60	15,20

*Armaturen für NW 14 mit Adapter PA W AB-14/17 möglich, siehe Seite 56 * Connectors for NW 14 available combined with PA W AB-14/17, see page 56

90°-Winkelflansch

90° Elbow flange

MS	Messing, vernickelt	brass, nickel-plated
PA	Polyamid	polyamide
F	Winkel mit Flansch	elbow flange
G	gerade Verschraubung	straight connector
O	ohne Dichtungssatz	without seal
R	mit rohreseitiger Dichtung	with seal on tube
B	schwarz	black
G	grau	grey
M	metallisch	metallic
17	Nennweite	nominal width
M	metrisches Gewinde	metric thread
P	PG-Gewinde	PG thread
16	Gewindegröße	thread size

PA F O G - 17
MSG R M - 17 P 16

PA F O G / PA F O B

Bestell-Nr. Article no grau grey	schwarz black	für for NW	Durchlaßöff. pass through	L	B	D	C	E	F	d	H	h	kg/100 St. kg/100 pcs.	(VE) St. (PU) pcs.
PA F O G-07	PA F O B-07	07	14 x 6,4	30,4	32,0	14,0	16,0	*	23,0	4,0	12,0	5,0	0,4	50
PA F O G-10	PA F O B-10	10	16 x 9,6	32,8	35,0	17,0	17,5	*	26,0	4,0	15,0	6,5	0,5	50
PA F O G-12	PA F O B-12	12	17 x 12,2	35,2	38,0	20,0	19,0	*	29,0	4,0	18,0	8,0	0,6	50
PA F O G-17	PA F O B-17	17	22 x 17,5	51,0	45,0	27,0	22,5	*	35,5	5,5	34,0	20,5	1,6	30
PA F O G-23	PA F O B-23	23	28 x 21,5	69,5	62,0	35,0	31,0	*	53,0	6,5	41,0	23,5	3,3	30
PA F O G-29	PA F O B-29	29	37 x 30,0	78,0	67,0	41,8	22,0	36,0	54,0	6,5	47,9	27,0	4,8	20
PA F O G-36	PA F O B-36	36	57 x 38,0	103,0	85,0	51,0	29,0	30,0	73,0	6,5	57,0	31,5	7,9	10
PA F O G-48	PA F O B-48	48	68 x 50,0	119,5	88,0	63,8	44,0	30,0	72,0	6,5	69,8	37,9	12,5	10

* 2-Lochbefestigung Winkelflansch für Nennweite 70 und 90 siehe Seite 50.
* 2-hole fastener 90° elbow flange for NW 70 and 90: see page 50.

H = Gesamthöhe H = total height
h = Höhe bis Rohrmittle h = height till middle of tube

MS G R M...
Ganzmetall-Verschraubung für extreme Beanspruchung
Full metal Connector for extreme strain

Diese mehrteilige Verschraubung ist auch mit Zugentlastung lieferbar. Sonderwünsche bezüglich der äußeren Maße können berücksichtigt werden. This multi-component connector is also available with strain relief. Special wishes as to the outer measurements can be considered.



MS G R M, metr.

Bestell-Nr. Article no	für for NW	M	g	D	L	SW	kg/100 St. kg/100 pcs.	(VE) St. (PU) pcs.
MS G R M-10M16	10	16 x 1,5	8	23,9	28,5	22		10
MS G R M-12M20	12	20 x 1,5	8	29,6	30,0	27		10
MS G R M-17M25	17	25 x 1,5	10	35,0	39,5	32		10
MS G R M-23M32	23	32 x 1,5	10	39,6	39,0	36		10
MS G R M-29M40	29	40 x 1,5	10	50,5	38,0	46		10
MS G R M-36M50	36	50 x 1,5	14	60,8	50,5	55		1
MS G R M-48M63	48	63 x 1,5	14	77,0	53,5	70		1

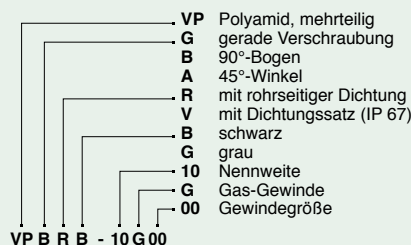
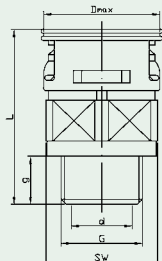
MS G R M, PG

Bestell-Nr. Article no	für for NW	PG	g	D	L	SW	kg/100 St. kg/100 pcs.	(VE) St. (PU) pcs.
MS G R M-10P09	10	09	8	23,9	28,5	22	-	10
MS G R M-12P11	12	11	8	29,6	30,0	27	-	10
MS G R M-17P16	17	16	10	35,0	39,5	32	12,9	10
MS G R M-23P21	23	21	10	39,6	39,0	36	12,4	10
MS G R M-29P29	29	29	10	50,5	38,0	46	20,0	10
MS G R M-36P36	36	36	14	60,8	50,5	55	43,7	1
MS G R M-48P48	48	48	14	77,0	53,5	70	43,8	1

Verschraubung mit integrierter Manschetten-Dichtung und Gas-Außengewinde, IP 67 rohreseitig

Connector with integrated seal, Gas male thread, IP 67 on tube

32

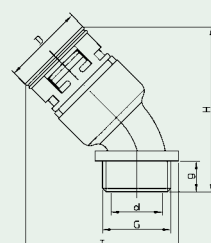
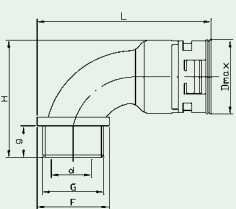


polyamide, multi-components
straight connector
90° arched elbow
45° elbow
with seal on tube
with seal set (IP 67)
black
grey
nominal width
gas thread
thread size

VP G R G / VP G R B, Gas, gerade Verschraubung straight connector

Bestell-Nr. Article no grau grey	schwarz black	für for NW	G	d	g	Dmax	L	SW	kg/100 St. kg/100 pcs.	(VE) St. (PU) pcs.
PA G O G-07G00*	PA G O B-07G00*	07	1/4"	7,0	9,7	18,5	36,0	15	0,34	50
VP G R G-10G00	VP G R B-10G00	10	1/4"	9,5	12,0	21,1	36,5	19	0,48	50
VP G R G-12G01	VP G R B-12G01	12	3/8"	12,8	12,0	24,0	37,5	22	0,60	50
VP G R G-12G02	VP G R B-12G02	12	1/2"	13,9	12,0	24,5	37,5	22	0,65	50
VP G R G-17G02	VP G R B-17G02	17	1/2"	15,2	12,0	30,4	41,5	27	1,10	50
VP G R G-23G03	VP G R B-23G03	23	3/4"	20,6	14,0	40,0	52,5	36	2,10	30
VP G R G-29G04	VP G R B-29G04	29	1"	26,8	14,0	46,0	53,5	41	2,70	30
VP G R G-36G05	VP G R B-36G05	36	1-1/4"	34,2	14,0	57,0	59,0	50	6,50	10
VP G R G-48G06	VP G R B-48G06	48	1-1/2"	40,0	14,0	73,0	64,0	65	8,40	10
VP G R G-48G07	VP G R B-48G07	48	2"	52,0	14,0	73,0	64,0	65	8,40	10

* IP54



VP B R G / VP B R B, Gas, 90°-Bogenwinkel 90° arched elbow

Bestell-Nr. Article no grau grey	schwarz black	für for NW	G	d	g	D	L	H	F	kg/100 St. kg/100 pcs.	(VE) St. (PU) pcs.
VP B R G-10G01	VP B R B-10G01	10	3/8"	9,9	11,0	21,1	56,0	37,6	20,0	0,90	50
VP B R G-12G01	VP B R B-12G01	12	3/8"	10,4	11,0	24,3	58,5	41,0	23,0	1,20	50
VP B R G-17G02	VP B R B-17G02	17	1/2"	14,7	13,0	30,4	69,8	48,2	27,0	1,90	50
VP B R G-23G03	VP B R B-23G03	23	3/4"	20,1	14,0	40,0	87,8	59,0	35,0	3,10	30
VP B R G-29G04	VP B R B-29G04	29	1"	25,5	14,0	46,0	98,0	66,0	43,0	4,60	30
VP B R G-36G05	VP B R B-36G05	36	1-1/4"	33,3	14,0	56,0	112,4	78,0	53,5	8,90	10
VP B R G-48G07	VP B R B-48G07	48	2"	49,3	14,0	70,0	132,8	91,5	65,0	12,30	10

VP A R G / VP A R B, Gas, 45°-Bogenwinkel 45° arched elbow

Bestell-Nr. Article no grau grey	schwarz black	für for NW	G	d	g	D	T	H	F	kg/100 St. kg/100 pcs.	(VE) St. (PU) pcs.
VP A R G-10G01	VP A R B-10G01	10	3/8"	9,9	11,0	21,1	41,4	46,5	20,0	0,70	50
VP A R G-12G01	VP A R B-12G01	12	3/8"	10,5	11,0	24,3	44,0	50,0	23,0	1,00	50
VP A R G-17G02	VP A R B-17G02	17	1/2"	14,7	13,0	30,4	53,2	58,0	27,0	1,54	50
VP A R G-23G03	VP A R B-23G03	23	3/4"	20,1	14,0	40,0	67,0	70,5	35,0	2,78	30
VP A R G-29G04	VP A R B-29G04	29	1"	25,5	14,0	46,0	76,0	77,0	43,0	3,87	30
VP A R G-36G05	VP A R B-36G05	36	1-1/4"	33,3	14,0	56,0	90,5	91,5	54,0	7,17	10
VP A R G-48G07	VP A R B-48G07	48	2"	49,3	14,0	70,0	108,2	104,5	65,0	10,17	10

REIKU gerade Armatur mit EMV-Verschraubung

REIKU EMC Connector

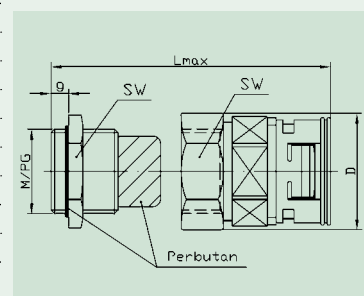
EMV-Verschraubung EMC Connector

Einsatz für CU-geschirmte Kabel und Leitungen. Das Kabel wird an der zu kontaktierenden Stelle abisoliert und in die Verschraubung eingeführt. Die Kontaktfeder der Verschraubung muß den abisolierten Bereich des Kabels kontaktieren. Dies ergibt eine niederohmige Schirmkontaktierung. Die angezogene Verschraubung fixiert und entlastet das Kabel gegen Zug. To be used on CU-screened cables and wirings. Insert the stripped cable into the contacting surface of the cable gland. The contact spring must touch the stripped cable in the contacting area. The result is a low-ohm screened contact. Once the cable gland is put on, the cable is tightened and acts as a strain relief.



33

Bestell-Nr. Article no	NW	M/PG	g	Klemm. Clamping	L max	D	SW1	SW2	kg/100 St. kg/100 pcs.	(VE) St. (PU) pcs.
VMEVB-10M16	10	M 16 x 1,5	7	9,0-4,5	53,0	25,0	20	24	3,50	30
VMEVB-12M20	12	M 20 x 1,5	8	17,5-7,0	60,0	30,5	24	28	4,75	30
VMEVB-17M25	17	M 25 x 1,5	8	16,5-9,0	63,0	37,5	29	34	7,28	30
VMEVB-23M32	23	M 32 x 1,5	9	21,0-11,0	77,0	45,5	36	41	12,74	30
VMEVB-29M40	29	M 40 x 1,5	9	28,0-19,0	85,0	57,0	45	50	20,34	20
VMEVB-36M50	36	M 50 x 1,5	10	35,0-27,0	95,0	68,0	54	60	29,10	10
VMEVB-48M50	48	M 50 x 1,5	10	35,0-27,0	98,0	68,0	54	60	32,20	10
VMEVB-12P11	12	PG 11	6	9,5-5,0	60,0	30,5	20	24	3,10	30
VMEVB-17P16	17	PG 16	6,5	14,0-8,5	63,0	30,5	24	28	4,70	30



REIKU EMV-Verschraubungs-Elemente REIKU EMC connector elements

Durch nur zwei zusätzliche Elemente aus galvanisch vernickeltem Messing wird aus einer Verschraubung* mit Metallgewinde eine vollwertige EMV-Verschraubung mit hoher Schirmdämpfung. Eine Kabelabschirmung wird im Inneren eines Metallgehäuses durch den zusätzlichen Konusring und die Überwurfmutter rundum mit dem Metallgewinde kontaktiert. Besonderer Vorteil: Äußerst kurze Bauhöhe und die Möglichkeit, auch eine Winkelverschraubung mit Metallgewinde einzusetzen. A fitting* with metal thread can be developed into a fitting with a high screening quality by using only 2 additional elements of galvanized nickel-plated brass. Screening is achieved inside the metal housing through contact to the additional taper ring and cape nut with the metal thread. Special advantage: shortest construction height and the possibility also to apply 90° elbow with metal thread.



Bestell-Nr. Article no	passend zu Gewinde metr. fits to metr. thread	Bestell-Nr. Article no	passend zu PG-Gewinde fits to PG thread
EMV M16	M 16 x 1,5	EMV P16	16
EMV M20	M 20 x 1,5	EMV P21	21
EMV M25	M 25 x 1,5	EMV P29	29
EMV M32	M 32 x 1,5	EMV P36	36
EMV M40	M 40 x 1,5	EMV P48	48
EMV M50	M 50 x 1,5		
EMV M63	M 63 x 1,5		

* separat zu bestellen, siehe Seiten 20, 21, 23, 25, 28, 29, 31. Potentialausgleichs-Gegenmuttern s. Seite 57. to order separately, see pages 20, 21, 23, 25, 28, 29, 31. potential-equalized lock nut see page 57.

Glatt-Wellrohradapter Smooth-tube adapter

Zur Verbindung von flexiblen Wellrohren mit starren Glattrohren. Stahl oder Kunststoff.
For connection of flexible tubings with rigid smooth-tubes. Steel or plastic.

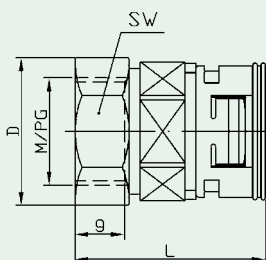
Bestell-Nr. Article no	NW	M	PG	Glattrohr AD Smooth-tube OD	Einstecktiefe Insert depth	VE PU
VM S V G-12/18	12	-	11	18,6	15,2	30
VM S V G-17/22	17	-	16	22,5	15,2	30
VM S V G-17/20	17	20	-	20,5	15,0	30
VM S V G-17/25	17	25	-	25,0	14,5	30
VM S V G-23/28	23	-	21	28,3	18,0	20
VM S V G-29/32	29	32	-	32,0	19,0	20
VM S V G-29/37	29	-	29	37,0	19,0	20
VM S V G-36/40	36	40	-	40,0	20,0	10
VM S V G-36/47	36	-	36	47,0	20,0	10
VM S V G-48/59	48	-	48	59,3	24,0	10



Armaturen mit integrierter Manschetten-Dichtung und Innengewinde, IP 67 rohrseitig

Connector with integrated seal, female thread, IP 67 on tube

34



VP Polyamid, mehrteilig mit Innengewinde mit rohrseitiger Dichtung mit Dichtungssatz (IP 67) schwarz
 I mit Innengewinde mit rohrseitiger Dichtung mit Dichtungssatz (IP 67) grau
 R mit rohrseitiger Dichtung mit Dichtungssatz (IP 67) schwarz
 V mit rohrseitiger Dichtung mit Dichtungssatz (IP 67) grau
 B Nennweite
 G metrisches Gewinde
 17 PG-Gewinde
 M Gas-Gewinde
 P Gewindegröße
 16

polyamide, multi-components connector, female thread with seal on tube with seal set (IP 67) black
 grey
 nominal width
 metric thread
 PG thread
 gas thread
 thread size

VP I R G / VP I R B, metr. Andere Gewinde auf Anfrage other thread sizes on request

Bestell-Nr. grau grey	Article no schwarz black	für for NW	M	d	g	L	D _{max}	SW	kg/100 St. kg/100 pcs.	(VE) St. (PU) pcs.
VP I R G-10M121	VP I R B-10M121	10	12 x 1,0							50
VP I R G-10M181	VP I R B-10M181	10	18 x 1,0							50
VP I R G-10M16	VP I R B-10M16	10	16 x 1,5	10,4	12,0	36,0	21,1	19	0,57	50
VP I R G-12M16	VP I R B-12M16	12	16 x 1,5	12,9	12,0	37,0	24,0	19	0,68	50
VP I R G-12M20	VP I R B-12M20	12	20 x 1,5	12,9	12,0	38,5	27,0	24		50
VP I R G-17M20	VP I R B-17M20	17	20 x 1,5	18,0	16,0	43,0	30,4	27	1,22	50
VP I R G-17M25	VP I R B-17M25	17	25 x 1,5	18,0	15,0	43,0	33,5	30		50
VP I R G-23M25	VP I R B-23M25	23	25 x 1,5	22,5	17,0	53,0	40,0	32	2,68	30
VP I R G-23M32	VP I R B-23M32	23	32 x 1,5	22,5	15,0	53,0	42,5	38		30
VP I R G-29M32	VP I R B-29M32	29	32 x 1,5	30,0	16,5	53,5	46,0	36	2,82	30
VP I R G-29M40	VP I R B-29M40	29	40 x 1,5	30,0	15,0	54,0	50,5	46		30
VP I R G-36M40	VP I R B-36M40	36	40 x 1,5	38,0	20,0	63,5	57,0	46	7,00	10
VP I R G-36M50	VP I R B-36M50	36	50 x 1,5	38,0	20,0	63,0	62,0	57		10
VP I R G-48M50	VP I R B-48M50	48	50 x 1,5	48,0	21,0	68,0	73,0	60	9,00	10
VP I R G-48M63	VP I R B-48M63	48	63 x 1,5	48,0	21,0	68,0	78,3	70		10

VP I R G / VP I R B, PG Andere Gewinde auf Anfrage other thread sizes on request

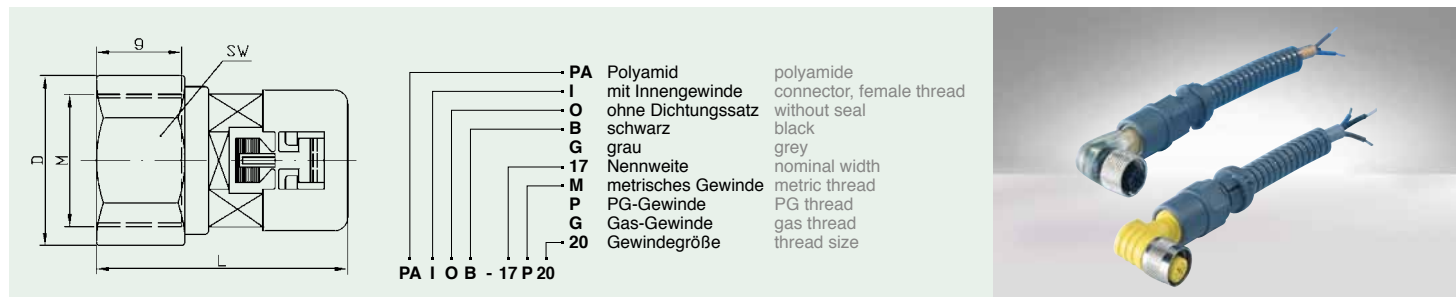
Bestell-Nr. grau grey	Article no schwarz black	für for NW	PG	d	g	L	D _{max}	SW	kg/100 St. kg/100 pcs.	(VE) St. (PU) pcs.
VP I R G-10P07	VP I R B-10P07	10	07	11,0	12,0	36,5	21,1	17	0,57	50
VP I R G-10P09	VP I R B-10P09	10	09	11,0	12,0	35,5	21,7	19	0,57	50
VP I R G-12P11	VP I R B-12P11	12	11	13,4	13,0	38,5	24,8	22	0,68	50
VP I R G-12P13	VP I R B-12P13	12	13,5	13,3	11,0	38,5	27,0	24	0,76	50
VP I R G-17P13	VP I R B-17P13	17	13,5	17,2	13,5	40,5	30,4	27	1,22	50
VP I R G-17P16	VP I R B-17P16	17	16	17,3	13,0	40,5	33,2	30	1,06	50
VP I R G-23P21	VP I R B-23P21	23	21	21,7	14,5	51,5	40,0	32	2,68	30
VP I R G-29P29	VP I R B-29P29	29	29	30,0	18,5	56,5	47,5	42	2,82	30
VP I R G-36P36	VP I R B-36P36	36	36	38,0	21,0	65,0	59,8	54	7,00	10
VP I R G-48P48	VP I R B-48P48	48	48	48,0	21,0	70,0	73,0	65	9,00	10

VP I R G / VP I R B, Gas Andere Gewinde auf Anfrage other thread sizes on request

Bestell-Nr. grau grey	Article no schwarz black	für for NW	Gas	d	g	L	D _{max}	SW	kg/100 St. kg/100 pcs.	(VE) St. (PU) pcs.
VP I R G-10G00	VP I R B-10G00	10	1/4"	11,0	12,0	36,0	21,1	19		50
VP I R G-12G01	VP I R B-12G01	12	3/8"	12,5	12,0	37,0	24,0	19		50
VP I R G-12G02	VP I R B-12G02	12	1/2"	12,5	12,0	37,0	24,0	24		50
VP I R G-17G02	VP I R B-17G02	17	1/2"	17,5	15,5	43,0	30,4	27		50
VP I R G-23G03	VP I R B-23G03	23	3/4"	22,5	17,0	53,5	40,0	32		30
VP I R G-29G04	VP I R B-29G04	29	1"	30,0	17,0	54,0	46,0	41		30

Armaturen mit Innengewinde

Connector with female thread



PA I O G / PA I O B, metr. Andere Gewinde auf Anfrage other thread sizes on request

Bestell-Nr. Article no grau grey	schwarz black	für for NW	M	d	g	L	D _{max}	SW	kg/100 St. kg/100 pcs.	(VE) St. (PU) pcs.
PA I O G-07M081	PA I O B-07M081	07	8 x 1,0	7,0	6,0	38,5	17,2	15	0,47	50
PA I O G-07M121	PA I O B-07M121	07	12 x 1,0	7,0	6,0	38,5	17,2	15	0,40	50
PA I O G-07M16	PA I O B-07M16	07	16 x 1,5	7,0	11,0	38,5	18,5	15		50
PA I O G-07M20	PA I O B-07M20	07	20 x 1,5							50
PA I O G-10M121	PA I O B-10M121	10	12 x 1,0	10,7	6,0	35,0	18,0	15	0,35	50
PA I O G-10M16	PA I O B-10M16	10	16 x 1,5	10,4	12,0	35,5	21,0	19	0,40	50
PA I O G-10M181	PA I O B-10M181	10	18 x 1,0	10,9	11,5	36,5	27,3	24	0,55	50
PA I O G-12M16	PA I O B-12M16	12	16 x 1,5	12,9	12,0	35,5	21,2	19	0,40	50
PA I O G-12M20	PA I O B-12M20	12	20 x 1,5	12,9	12,0	37,0	20,8	24	0,50	50
PA I O G-17M20	PA I O B-17M20	17	20 x 1,5	18,0	16,0	41,5	29,8	27	1,00	50
PA I O G-23M25	PA I O B-23M25	23	25 x 1,5	22,5	17,0	53,5	35,5	32	1,90	30
PA I O G-29M32	PA I O B-29M32	29	32 x 1,5	30,0	16,5	54,0	41,8	36	2,10	30
PA I O G-36M40	PA I O B-36M40	36	40 x 1,5	38,0	20,0	62,0	51,5	46	3,40	10
PA I O G-48M50	PA I O B-48M50	48	50 x 1,5	48,0	21,0	65,5	67,0	60	6,10	10

PA I O G / PA I O B, PG Andere Gewinde auf Anfrage other thread sizes on request

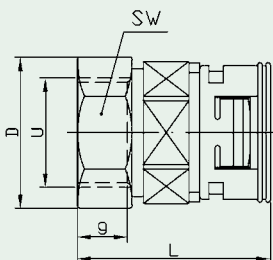
Bestell-Nr. Article no grau grey	schwarz black	für for NW	PG	d	g	L	D _{max}	SW	kg/100 St. kg/100 pcs.	(VE) St. (PU) pcs.
PA I O G-07P07	PA I O B-07P07	07	07	7,0	11,0	38,5	17,2	15	0,41	50
PA I O G-10P07	PA I O B-10P07	10	07	11,0	12,0	36,0	19,0	17	0,41	50
PA I O G-10P09	PA I O B-10P09	10	09	11,0	12,0	35,0	21,7	19	0,41	50
PA I O G-12P11	PA I O B-12P11	12	11	13,4	13,0	37,0	24,8	22	0,45	50
PA I O G-12P13	PA I O B-12P13	12	13,5	13,3	11,0	37,0	27,0	24	0,55	50
PA I O G-17P13	PA I O B-17P13	17	13,5	17,2	13,5	39,0	28,5	24	0,91	50
PA I O G-17P16	PA I O B-17P16	17	16	17,3	13,0	39,0	33,2	30	0,80	50
PA I O G-23P21	PA I O B-23P21	23	21	21,7	14,5	52,0	36,0	32	1,57	30
PA I O G-29P29	PA I O B-29P29	29	29	30,0	18,5	57,0	47,5	42	2,22	30
PA I O G-36P36	PA I O B-36P36	36	36	38,0	21,0	63,5	59,8	54	3,87	10
PA I O G-48P48	PA I O B-48P48	48	48	48,0	21,0	67,5	73,0	65	5,81	10

PA I O G / PA I O B, Gas Andere Gewinde auf Anfrage other thread sizes on request

Bestell-Nr. Article no grau grey	schwarz black	für for NW	Gas	d	g	L	D _{max}	SW	kg/100 St. kg/100 pcs.	(VE) St. (PU) pcs.
PA I O G-10G00	PA I O B-10G00	10	1/4"	11,0	12,0	35,5	21,1	19		50
PA I O G-12G01	PA I O B-12G01	12	3/8"	12,5	12,0	35,5	21,2	19		50
PA I O G-12G02	PA I O B-12G02	12	1/2"	12,5	12,0	35,5	27,0	24		50
PA I O G-17G02	PA I O B-17G02	17	1/2"	17,5	15,5	41,5	30,0	27		30
PA I O G-23G03	PA I O B-23G03	23	3/4"	22,5	17,0	54,0	35,5	32		30
PA I O G-29G04	PA I O B-29G04	29	1"	30,0	17,0	54,4	46,0	41		10

Armaturen mit integrierter Manschetten-Dichtung und Innengewinde UNEF/UNS, IP 67 rohrseitig

Straight Connector with integrated seal, female thread UNEF/UNS, IP 67 on tube



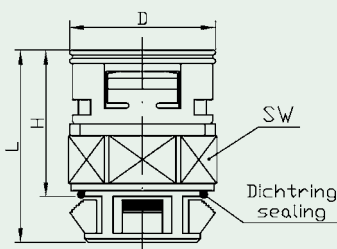
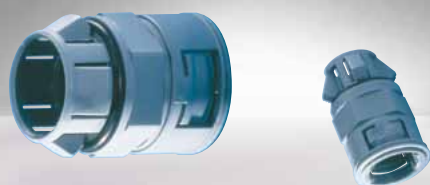
VP Polyamid, mehrteilig mit Innengewinde
 I gerade
 G mit rohrseitiger Dichtung mit Dichtungssatz (IP 67)
 V schwarz
 B grau
 17 Nennweite
 U UNEF/UNS Gewinde
 S Steckteil
 07 Gewindegröße

polyamide, multi-components connector, female thread straight with seal on tube with seal set (IP 67) black grey nominal width UNEF/UNS thread push-in part thread size

VP I R B - 17 U 07

VP I R G / VP I R B, UNEF/UNS

Bestell-Nr. Article no grau grey	schwarz black	für for NW	U	d	g	L	Dmax	SW	kg/100 St. kg/100 pcs.	(VE) St. (PU) pcs.
VP I R G-10U05	VP I R B-10U05	10	5/8"-24	10,2	12,0	36,0	21,5	19	0,55	50
VP I R G-10U07	VP I R B-10U07	10	3/4"-20	10,8	12,0	37,0	27,0	24	0,74	50
VP I R G-12U05	VP I R B-12U05	12	5/8"-24	13,0	12,0	37,0	24,0	19	0,63	50
VP I R G-12U06	VP I R B-12U06	12	11/16"-24	13,0	13,0	38,5	25,0	22	0,76	50
VP I R G-12U07	VP I R B-12U07	12	3/4"-20	10,8	11,0	37,5	27,1	24	0,81	50
VP I R G-12U09	VP I R B-12U09	12	7/8"-20	13,0	12,0	38,5	30,2	27	0,79	50
VP I R G-12U10	VP I R B-12U10	12	15/16"-20	13,0	11,0	38,5	30,2	27	0,79	50
VP I R G-17U07	VP I R B-17U07	17	3/4"-20	17,4	16,0	42,5	30,4	24		50
VP I R G-17U09	VP I R B-17U09	17	7/8"-20	17,5	15,5	42,5	30,4	27	1,00	50
VP I R G-17U10	VP I R B-17U10	17	15/16"-20	17,5	15,0	43,0	30,5	27	1,00	50
VP I R G-17U11	VP I R B-17U11	17	1"-20	17,5	14,5	43,0	33,7	30	1,10	50
VP I R G-17U14	VP I R B-17U14	17	1 3/16"-18	17,5	12,5	43,5	37,8	34	1,20	50
VP I R G-17U17	VP I R B-17U17	17	13/8" -18	17,5	12,5	44,0	40,5	37	1,30	50
VP I R G-23U14	VP I R B-23U14	23	1 3/16"-18	22,5	6,5	46,5	40,0	36	2,16	30
VP I R G-23U17	VP I R B-23U17	23	13/8" -18	22,5	14,5	53,0	40,5	38	2,10	30
VP I R G-23U18	VP I R B-23U18	23	1 7/16"-18	22,0	14,5	55,0	43,5	36	2,68	30
VP I R G-29U24	VP I R B-29U24	29	2"-18 UNS	30,0	14,0	56,0	59,3	55	3,30	30



Wellrohrsteckanschluß Push-in tube connector

Dieser Wellrohranschluß wird nur noch in eine dem PG-Durchmesser bzw. metrischen Durchmesser entsprechende Bohrung gesteckt. Innengewinde oder Gegenmutter sind nicht erforderlich. Wandstärkenbereich 1-2,5mm.

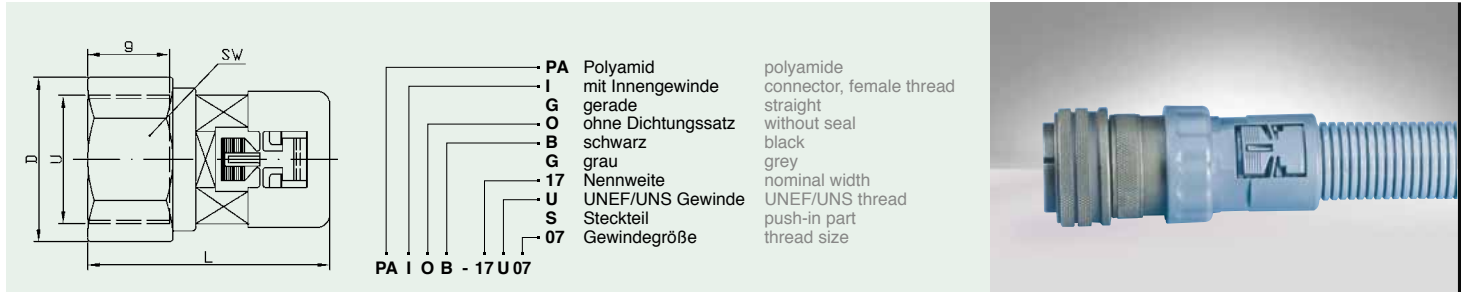
Just push in this tube connector into a hole which corresponds to the PG or metric diameter. Female thread in the wall or lock nut is not necessary. Wall thickness area 1-2,5mm.

VP G V G / VP G V B

Bestell-Nr. Article no grau grey	schwarz black	für for NW	Bohrung für boring for PG/M	Bohrung boring Ø B	H	L	Dmax	SW	kg/100 St. kg/100 pcs.	(VE) St. (PU) pcs.
VP G V G-10S15	VP G V B-10S15	10	09	15,2	26,5	38,0	21,1	19	0,56	50
VP G V G-12S19	VP G V B-12S19	12	11	18,6	27,5	39,0	24,0	22	0,64	50
VP G V G-17S22	VP G V B-17S22	17	16	22,5	30,0	42,0	30,4	27	1,10	50
VP G V G-23S28	VP G V B-23S28	23	21	28,3	39,5	52,0	40,0	36	2,22	30
VP G V G-23S32	VP G V B-23S32	23	M 32	32,2	39,0	51,5	40,0	36	2,00	30
VP G V G-29S37	VP G V B-29S37	29	29	37,0	41,0	57,5	46,0	41	2,98	30

Armaturen mit Innengewinde UNEF/UNS

Straight Connector with female thread UNEF/UNS



37

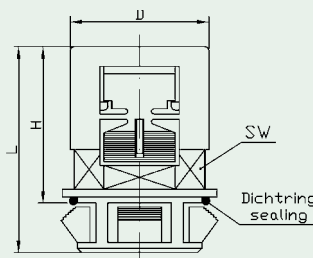
PA I O G / PA I O B, UNEF/UNS Andere Gewinde auf Anfrage other thread sizes on request

Bestell-Nr. <small>Article no</small>	<small>für for</small>	<small>U</small>	<small>d</small>	<small>g</small>	<small>L</small>	<small>D_{max}</small>	<small>SW</small>	<small>kg/100 St.</small>	<small>(VE) St.</small>	
<small>grau grey</small>	<small>schwarz black</small>	<small>NW</small>						<small>kg/100 pcs.</small>	<small>(PU) pcs.</small>	
PA I O G-07U05	PA I O B-07U05	07	5/8"-24	7,0	11,0	38,5	18,5	15	0,41	50
PA I O G-10U05	PA I O B-10U05	10	5/8"-24	10,2	12,0	35,5	21,5	19	0,39	50
PA I O G-10U07	PA I O B-10U07	10	3/4"-20	10,8	12,0	36,5	27,0	24	0,58	50
PA I O G-12U05	PA I O B-12U05	12	5/8"-24	13,0	12,0	35,5	21,5	19	0,39	50
PA I O G-12U06	PA I O B-12U06	12	11/16"-24	13,0	13,0	37,0	25,0	22	0,52	50
PA I O G-12U07	PA I O B-12U07	12	3/4"-20	10,8	11,0	36,0	27,1	24	0,68	50
PA I O G-12U09	PA I O B-12U09	12	7/8"-20	13,0	12,0	37,0	30,2	27	0,55	50
PA I O G-12U10	PA I O B-12U10	12	15/16"-20	13,0	11,0	37,0	30,2	27	0,55	50
PA I O G-17U07	PA I O B-17U07	17	3/4"-20	17,4	16,0	41,0	27,0	24		50
PA I O G-17U09	PA I O B-17U09	17	7/8"-20	17,5	15,5	41,0	30,2	27	0,77	50
PA I O G-17U10	PA I O B-17U10	17	15/16"-20	17,5	15,0	41,5	30,5	27	0,77	50
PA I O G-17U11	PA I O B-17U11	17	1"-20	17,5	14,5	41,5	33,7	30	0,90	50
PA I O G-17U14	PA I O B-17U14	17	1 3/16"-18	17,5	12,5	42,0	37,8	34	1,00	50
PA I O G-17U17	PA I O B-17U17	17	1 3/8"-18	17,5	12,5	42,5	40,5	37	1,10	50
PA I O G-23U14	PA I O B-23U14	23	1 3/16"-18	22,5	6,5	47,0	39,0	36		30
PA I O G-23U17	PA I O B-23U17	23	1 3/8"-18	22,5	14,5	53,5	40,5	38	1,60	30
PA I O G-23U18	PA I O B-23U18	23	1 7/16"-18	22,0	14,5	55,5	43,5	32	2,22	30
PA I O G-29U18B	PA I O B-29U18B	29	1 7/16"-8	32,7	7,0	56,5	41,8	38	2,15	30
PA I O G-29U24	PA I O B-29U24	29	2"-18 UNS	30,0	14,0	56,5	59,3	55	2,70	30

Wellrohrsteckanschluß Push-in tube connector

Dieser Wellrohranschluß wird nur noch in eine dem PG-Durchmesser bzw. metrischen Durchmesser entsprechende Bohrung gesteckt. Innengewinde oder Gegenmutter sind nicht erforderlich. Wandstärkenbereich 1-2,5mm.

Just push in this tube connector into a hole which corresponds to the PG or metric diameter. Female thread in the wall or lock nut is not necessary. Wall thickness area 1-2,5mm.



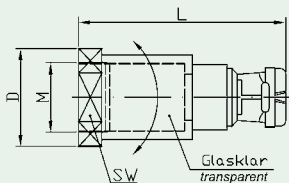
PA G O G / PA G O B

Bestell-Nr. <small>Article no</small>	<small>für for</small>	<small>Bohrung für</small>	<small>Bohrung</small>	<small>H</small>	<small>L</small>	<small>D_{max}</small>	<small>SW</small>	<small>kg/100 St.</small>	<small>(VE) St.</small>	
<small>grau grey</small>	<small>schwarz black</small>	<small>NW</small>	<small>boring for PG/M</small>	<small>boring Ø B</small>				<small>kg/100 pcs.</small>	<small>(PU) pcs.</small>	
PA G O G-07S13	PA G O B-07S13	07	07	12,5	28,3	38,0	17,5	15	0,36	50
PA G O G-10S15	PA G O B-10S15	10	09	15,2	26,0	37,5	20,0	15	0,40	50
PA G O G-12S19	PA G O B-12S19	12	11	18,6	26,0	37,5	23,0	17	0,47	50
PA G O G-17S22	PA G O B-17S22	17	16	22,5	28,5	40,5	27,0	24	1,00	50
PA G O G-23S28	PA G O B-23S28	23	21	28,3	40,0	52,0	35,0	32	1,60	30
PA G O G-23S32	PA G O B-23S32	23	M 32	32,2	40,0	51,5	39,0	32	1,40	30
PA G O G-29S37	PA G O B-29S37	29	29	37,0	41,0	57,5	44,0	38	2,80	30

Kupplungsstück für Initiatoren

Joint for Transmitter

38



Kupplungsstück zum Befestigen von Wellrohren an berührungslosen Endschaltern
Joint to connect corrugated tubings with transmitters.

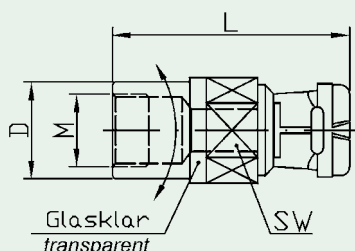


PA N O G Typ: lang, gerade type: long, straight

Bestell-Nr. grau grey	Article no	für for NW	Gewinde thread size	SW	D _{max}	L	(VE) St. (PU) pcs.
PA N O G-07M081		07	M08x1	12	17,2	53,5	50
PA N O G-07M121		07	M12x1	15	17,2	53,5	50
PA N O G-07M181		07	M18x1	22	25,0	53,5	50
PA N O G-07M301		07	M30x1,5	36	41,5	53,5	50
PA N O G-10M081		10	M08x1	12	24,2	64,5	50
PA N O G-10M121		10	M12x1	15	24,2	64,5	50
PA N O G-10M181		10	M18x1	22	25,0	64,5	50
PA N O G-10M301		10	M30x1,5	36	41,5	64,5	50

PA N O B Typ: lang, gerade type: long, straight

Bestell-Nr. schwarz black	Article no	für for NW	Gewinde thread size	SW	D _{max}	L	(VE) St. (PU) pcs.
PA N O B-07M081		07	M08x1	12	17,2	53,5	50
PA N O B-07M121		07	M12x1	15	17,2	53,5	50
PA N O B-07M181		07	M18x1	22	25,0	53,5	50
PA N O B-07M301		07	M30x1,5	36	41,5	53,5	50
PA N O B-10M081		10	M08x1	12	24,2	64,5	50
PA N O B-10M121		10	M12x1	15	24,2	64,5	50
PA N O B-10M181		10	M18x1	22	25,0	64,5	50
PA N O B-10M301		10	M30x1,5	36	41,5	64,5	50



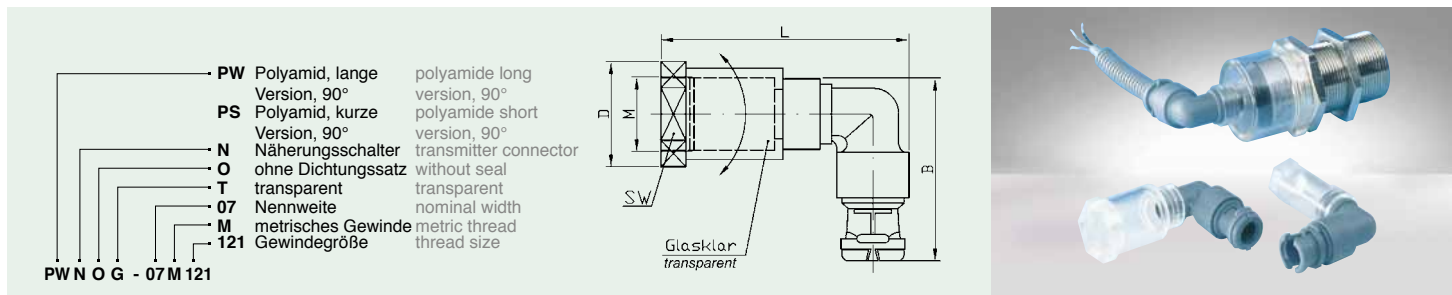
PK N O G Typ: kurz, gerade type: short, straight

Bestell-Nr. grau grey	Article no	für for NW	Gewinde thread size	SW	D _{max}	L	(VE) St. (PU) pcs.
PK N O G-07M081		07	M08x1	15	17,5	39,0	50
PK N O G-07M121		07	M12x1	15	17,5	39,0	50

PK N O B Typ: kurz, gerade type: short, straight

Bestell-Nr. schwarz black	Article no	für for NW	Gewinde thread size	SW	D _{max}	L	(VE) St. (PU) pcs.
PK N O B-07M081		07	M08x1	15	17,5	39,0	50
PK N O B-07M121		07	M12x1	15	17,5	39,0	50

90°-Winkelkupplungsstück für Initiatoren 90° elbow joint for transmitter



PW Polyamid, lange Version, 90°
PS Polyamid, kurze Version, 90°
N Näherungsschalter ohne Dichtungssatz transparent
O transparent
T transparent
07 Nennweite
M metrisches Gewinde
121 Gewindegröße

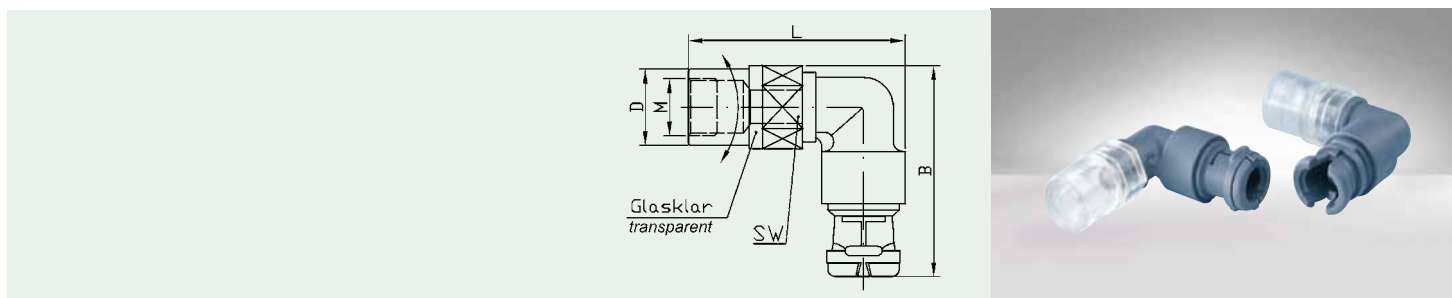
polyamide long version, 90°
 polyamide short version, 90°
 transmitter connector without seal transparent
 transparent
 nominal width
 metric thread
 thread size

PW N O G Typ: lang, 90° Winkel type: long, 90° elbow

Bestell-Nr. grau grey	Article no	für for NW	Gewinde thread size	SW	D _{max}	L	B	(VE) St. (PU) pcs.
PW N O G-07M081		07	M08x1	12	17,5	59,5	44	50
PW N O G-07M121		07	M12x1	15	17,5	59,5	44	50
PW N O G-07M181		07	M18x1	22	25	59,5	44	50
PW N O G-07M301		07	M30x1,5	36	41,5	59,5	44	50

PW N O B Typ: lang, 90° Winkel type: long, 90° elbow

Bestell-Nr. schwarz black	Article no	für for NW	Gewinde thread size	SW	D _{max}	L	B	(VE) St. (PU) pcs.
PW N O B-07M081		07	M08x1	12	17,5	59,5	44	50
PW N O B-07M121		07	M12x1	15	17,5	59,5	44	50
PW N O B-07M181		07	M18x1	22	25	59,5	44	50
PW N O B-07M301		07	M30x1,5	36	41,5	59,5	44	50



PS N O G Typ: kurz, 90° Winkel type: short, 90° elbow

Bestell-Nr. grau grey	Article no	für for NW	Gewinde thread size	SW	D _{max}	L	B	(VE) St. (PU) pcs.
PS N O G-07M081		07	M08x1	15	17,5	45,5	44	50
PS N O G-07M121		07	M12x1	15	17,5	45,5	44	50

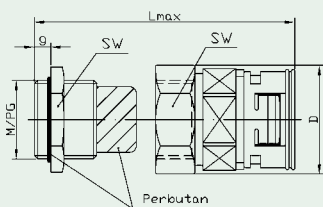
PS N O B Typ: kurz, 90° Winkel type: short, 90° elbow

Bestell-Nr. schwarz black	Article no	für for NW	Gewinde thread size	SW	D _{max}	L	B	(VE) St. (PU) pcs.
PS N O B-07M081		07	M08x1	15	17,5	45,5	44	50
PS N O B-07M121		07	M12x1	15	17,5	45,5	44	50

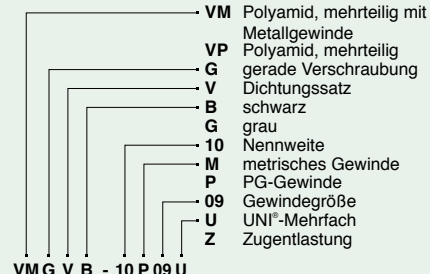
Gerade Armatur mit integrierter Manschetten-Dichtung, IP 67 rohrseitig

Tube connector with integrated seal with UNI®-multiple-feed, IP 67 on tube

42



Ermöglicht einen vollisolierten, getrennten Durchlaß von Kabeln/Litzen verschiedener Durchmesser; Schutzart IP 65. Geben Sie die Kabeldurchmesser und die Anzahl der Kabel an. Beispiel: 2 x Ø 4 / 1 x Ø 5 For fully insulated, separate transmission of cables/strands of different diameters; protection mode IP 65. Note the cable diameter and the number of wirings which are to be sealed. e.g.: 2 x Ø 4 / 1 x Ø 5



VM G V G...U / VM G V B...U, metr. für UNI®-Mehrfach-Einsätze for UNI®-multiple-feed

Bestell-Nr. Article no grau grey	schwarz black	für for M NW	g	D	Lmax	SW1	SW2	kg/100 St. kg/100 pcs.	(VE) St. (PU) pcs.
VM G V G-10M16U	VM G V B-10M16U	10	16 x 1,5	6	21,5	18	22	3,25	30
VM G V G-12M20U	VM G V B-12M20U	12	20 x 1,5	6	24,2	24	28	4,85	30
VM G V G-17M25U	VM G V B-17M25U	17	25 x 1,5	7	30,6	30	36	8,26	30
VM G V G-23M32U	VM G V B-23M32U	23	32 x 1,5	8	38,3	40	46	14,50	30
VM G V G-29M40U	VM G V B-29M40U	29	40 x 1,5	9	45,5	50	57	21,00	20
VM G V G-36M50U	VM G V B-36M50U	36	50 x 1,5	9	56	60	65	23,50	10

VM G V G...U / VM G V B...U, PG für UNI®-Mehrfach-Einsätze for UNI®-multiple-feed

Bestell-Nr. Article no grau grey	schwarz black	für for PG NW	g	D	Lmax	SW1	SW2	kg/100 St. kg/100 pcs.	(VE) St. (PU) pcs.
VM G V G-10P09U	VM G V B-10P09U	10	09	6	23	17	20	2,35	30
VM G V G-12P11U	VM G V B-12P11U	12	11	6	27,5	20	24	3,10	30
VM G V G-17P16U	VM G V B-17P16U	17	16	6	32	24	28	4,65	30
VM G V G-23P21U	VM G V B-23P21U	23	21	7	40,5	30	36	7,90	30
VM G V G-29P29U	VM G V B-29P29U	29	29	8	51	40	46	13,00	20
VM G V G-36P36U	VM G V B-36P36U	36	36	9	62	50	57	18,60	10

VP G R G...Z / VP G R B...Z, metr. zur Zugentlastung with strain relief

Bestell-Nr. Article no grau grey	schwarz black	für for M NW	Klemmb. clamp.* A B		g	D	Lmax	SW1	SW2	kg/100 St. kg/100 pcs.	(VE) St. (PU) pcs.
VP G R G-10M16Z	VP G R B-10M16Z	10	16 x 1,5	08-04 06-02	6			19			30
VP G R G-12M16Z	VP G R B-12M16Z	12	16 x 1,5	08-04 06-02	6			22			30
VP G R G-12M20Z	VP G R B-12M20Z	12	20 x 1,5	12-06 09-05	6			22			30
VP G R G-17M20Z	VP G R B-17M20Z	17	20 x 1,5	14-10 12-07	6			24			30
VP G R G-23M25Z	VP G R B-23M25Z	23	25 x 1,5	18-13 16-09	7			30			30
VP G R G-29M32Z	VP G R B-29M32Z	29	32 x 1,5	25-18 20-13	8			40			20
VP G R G-36M40Z	VP G R B-36M40Z	36	40 x 1,5	32-22 26-20	8			50			10
VP G R G-48M63Z	VP G R B-48M63Z	48	63 x 1,5	44-37 35-29	10			64			10

VM G V G...Z / VM G V B...Z, metr. zur Zugentlastung with strain relief

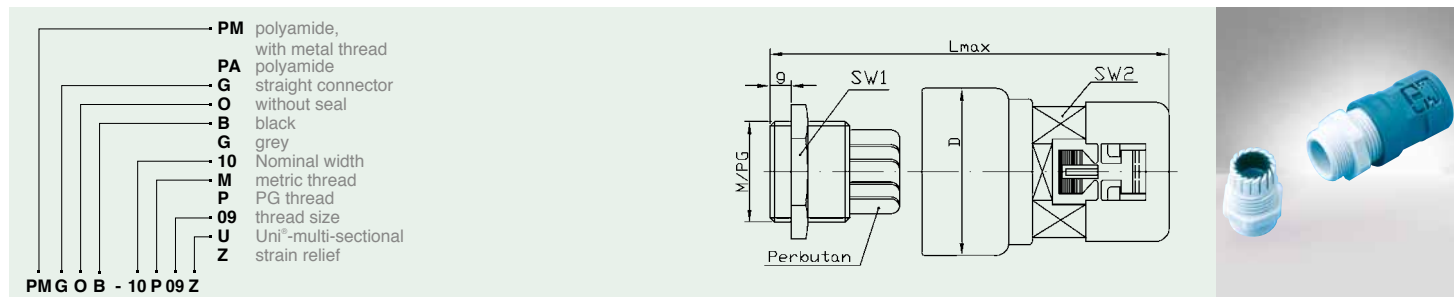
Bestell-Nr. Article no grau grey	schwarz black	für for M NW	Klemmb. clamp.* A B		g	D	Lmax	SW1	SW2	kg/100 St. kg/100 pcs.	(VE) St. (PU) pcs.
VM G V G-10M16Z	VM G V B-10M16Z	10	16 x 1,5	08-04 06-02	6			19			30
VM G V G-12M20Z	VM G V B-12M20Z	12	20 x 1,5	12-06 09-05	6			22			30
VM G V G-17M20Z	VM G V B-17M20Z	17	20 x 1,5	14-10 12-07	6			24			30
VM G V G-23M25Z	VM G V B-23M25Z	23	25 x 1,5	18-13 16-09	7			30			30
VM G V G-29M32Z	VM G V B-29M32Z	29	32 x 1,5	25-18 20-13	8			40			20
VM G V G-36M40Z	VM G V B-36M40Z	36	40 x 1,5	32-22 26-20	8			50			10
VM G V G-48M63Z	VM G V B-48M63Z	48	63 x 1,5	44-37 35-29	10			64			10

* Auf Anfrage auch mit verlängertem Gewinde erhältlich; UNI®-Mehrfach-Einsätze bitte separat bestellen.

* elongated thread also available on request. UNI®-multiple-feed to be ordered separately.

Gerade Armatur mit Kabelverschraubung zur Zugentlastung

Straight connector with cable gland for strain relief



PM polyamide, with metal thread
PA polyamide
G straight connector without seal
O black
B grey
10 Nominal width
M metric thread
P PG thread
09 thread size
U Uni®-multi-sectional strain relief
Z

PMG O B - 10 P 09 Z

PA G O G...Z / PA G O B...Z, met.

Bestell-Nr. Article no grau grey	schwarz black	für for NW	M	Klemmb. clamp.* A B		g	D	L _{max}	SW ₁	SW ₂	kg/100 St. kg/100 pcs.	(VE) St. (PU) pcs.
PA G O G-07M12Z	PA G O B-07M12Z	07	12 x 1,5	06-03	05-02	8	17	55	15	15	0,63	30
PA G O G-10M16Z	PA G O B-10M16Z	10	16 x 1,5	08-04	06-02	8	20	53	19	15	0,82	30
PA G O G-12M16Z	PA G O B-12M16Z	12	16 x 1,5	10-05	07-03	8	22	57	22	17	1,06	30
PA G O G-12M20Z	PA G O B-12M20Z	12	20 x 1,5	12-06	09-05	9	25	59	24	17	1,50	30
PA G O G-17M20Z	PA G O B-17M20Z	17	20 x 1,5	14-10	12-07	9	30	63	27	24	1,67	30
PA G O G-23M25Z	PA G O B-23M25Z	23	25 x 1,5	18-13	16-09	11	36	74	33	32	2,85	30
PA G O G-29M32Z	PA G O B-29M32Z	29	32 x 1,5	25-18	20-13	11	48	82	42	38	4,35	20
PA G O G-36M40Z	PA G O B-36M40Z	36	40 x 1,5	32-22	26-20	13	60	95	53	46	8,22	10
PA G O G-48M63Z	PA G O B-48M63Z	48	63 x 1,5	44-37	35-29	14	72	102	65	60	11,99	10

PA G O G...Z / PA G O B...Z, PG

Bestell-Nr. Article no grau grey	schwarz black	für for NW	PG	Klemmb. clamp.* A B		g	D	L _{max}	SW ₁	SW ₂	kg/100 St. kg/100 pcs.	(VE) St. (PU) pcs.
PA G O G-07P07Z	PA G O B-07P07Z	07	07	06-03	05-02	8	16,5	55	15	15	0,60	30
PA G O G-10P09Z	PA G O B-10P09Z	10	09	08-04	06-02	8	20,4	53	19	15	0,80	30
PA G O G-12P11Z	PA G O B-12P11Z	12	11	10-05	07-03	8	23,2	54	22	17	1,30	30
PA G O G-12P13Z	PA G O B-12P13Z	12	13,5	12-06	09-05	9	25,5	57	24	17	1,50	30
PA G O G-17P16Z	PA G O B-17P16Z	17	16	14-10	12-07	10	29	63	27	24	2,10	30
PA G O G-23P21Z	PA G O B-23P21Z	23	21	18-13	16-09	11	37	73	33	32	3,60	30
PA G O G-29P29Z	PA G O B-29P29Z	29	29	25-18	20-13	11	46	82	42	38	5,50	20
PA G O G-36P36Z	PA G O B-36P36Z	36	36	32-22	26-20	13	57	93	53	46	9,60	10
PA G O G-48P48Z	PA G O B-48P48Z	48	48	44-37	35-29	14	72	102	65	60	13,50	10

PM G O G...Z / PM G O B...Z, met.

Bestell-Nr. Article no grau grey	schwarz black	für for NW	M	Klemmb. clamp.* A B		g	D	L _{max}	SW ₁	SW ₂	kg/100 St. kg/100 pcs.	(VE) St. (PU) pcs.
PM G O G-07M12Z	PM G O B-07M12Z	07	12 x 1,5	06-03	05-02	5	17	51	14	15	1,43	30
PM G O G-10M16Z	PM G O B-10M16Z	10	16 x 1,5	08-04	06-02	6	20	50	19	15	2,27	30
PM G O G-12M16Z	PM G O B-12M16Z	12	16 x 1,5	08-04	06-02	6	25		19	17		30
PM G O G-12M20Z	PM G O B-12M20Z	12	20 x 1,5	12-06	09-05	6	25	52	22	17	3,32	30
PM G O G-17M20Z	PM G O B-17M20Z	17	20 x 1,5	14-10	12-07	6	30	55	24	24	3,87	30
PM G O G-23M25Z	PM G O B-23M25Z	23	25 x 1,5	18-13	16-09	7	36	68	30	32	6,69	30
PM G O G-29M32Z	PM G O B-29M32Z	29	32 x 1,5	25-18	20-13	8	48	73	40	38	12,46	20
PM G O G-36M40Z	PM G O B-36M40Z	36	40 x 1,5	32-22	26-20	8	60	85	50	46	19,97	10
PM G O G-48M63Z	PM G O B-48M63Z	48	63 x 1,5	44-37	35-29	10	72	93	64	60	35,93	10

PM G O G...Z / PM G O B...Z, PG

Bestell-Nr. Article no grau grey	schwarz black	für for NW	PG	Klemmb. clamp.* A B		g	D	L _{max}	SW ₁	SW ₂	kg/100 St. kg/100 pcs.	(VE) St. (PU) pcs.
PM G O G-07P07Z	PM G O B-07P07Z	07	07	06-03	05-02	5	18	51	14	15	1,42	30
PM G O G-10P09Z	PM G O B-10P09Z	10	09	08-04	06-02	6	20,4	50	17	15	2,10	30
PM G O G-12P11Z	PM G O B-12P11Z	12	11	10-05	07-03	6	23,2	51	20	17	2,70	30
PM G O G-12P13Z	PM G O B-12P13Z	12	13,5	12-06	09-05	6,5	25,5	52	22	17	3,30	30
PM G O G-17P16Z	PM G O B-17P16Z	17	16	14-10	12-07	6,5	29	58	24	24	4,00	30
PM G O G-23P21Z	PM G O B-23P21Z	23	21	18-13	16-09	7	37	68	30	32	7,00	30
PM G O G-29P29Z	PM G O B-29P29Z	29	29	25-18	20-13	8	46	73	40	38	12,00	20
PM G O G-36P36Z	PM G O B-36P36Z	36	36	32-22	26-20	8	57	83	50	46	19,00	10
PM G O G-48P48Z	PM G O B-48P48Z	48	48	44-37	35-29	10	72	93	64	60	36,00	10

* Klemmbereich: A = Standard B = Reduziert (Reduktion bitte angeben) * clamping range: A = standard B = reduced (please name the reduction)